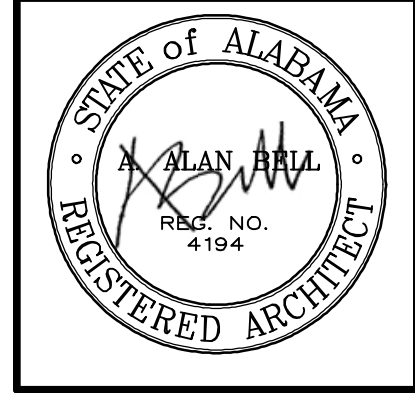


ALAN BELL ARCHITECT Inc
 ARCHITECTURE, ENGINEERING, PLANNING
 ASSOCIATES
 MARK SMITH, DOUGLAS ELKINS
 LORI MOON, LARRY TRANSUE, ADAM LONG
 alanbellarchitect.com
 211 GORDON ST BREMEN, GA 770-537-8856
 8 EAST 4TH AVE CARROLLTON, GA 770-630-8856

REVISIONS	BY

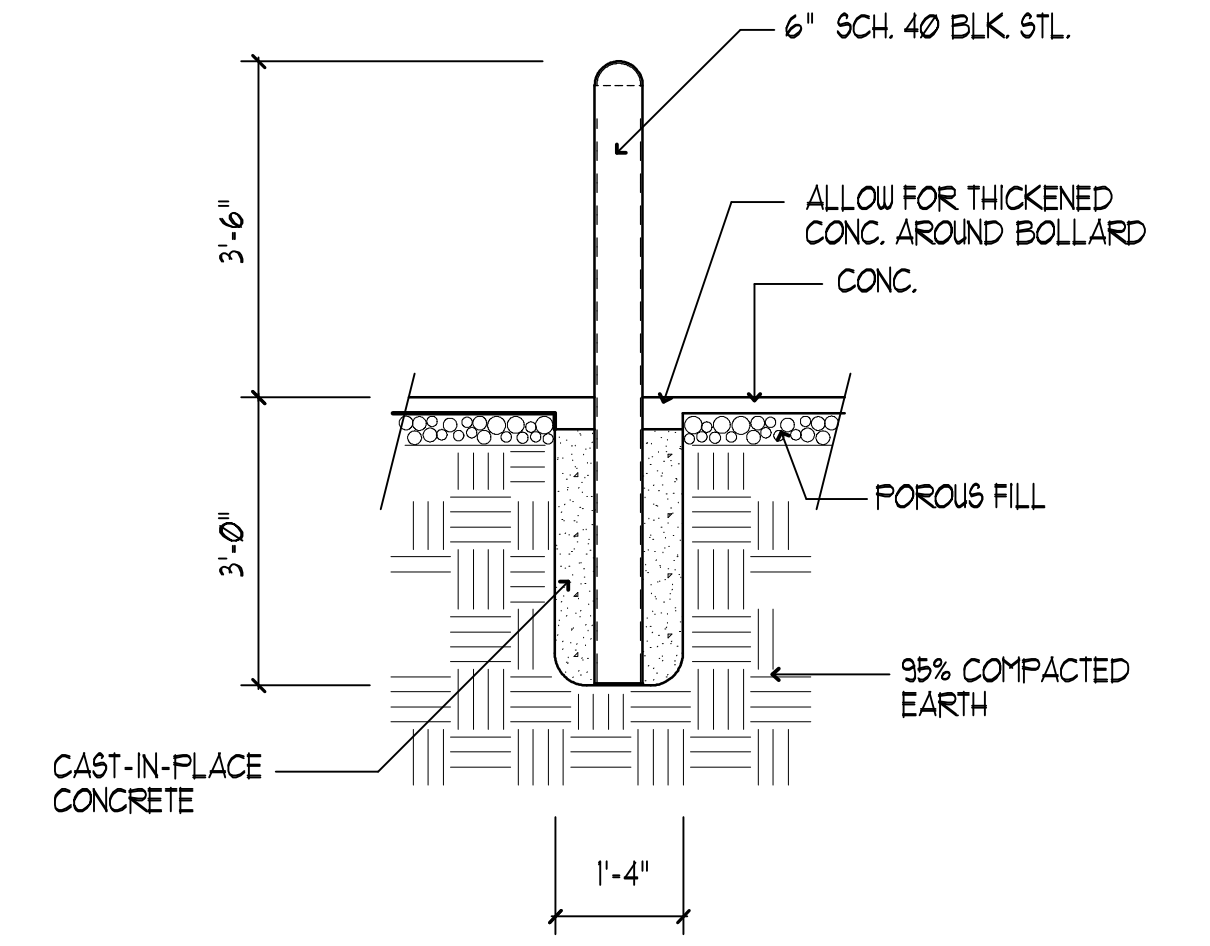
NEW APARTMENTS FOR
PIER POINT
 LINCOLN, ALABAMA

CONTRACTOR SHALL VERIFY ALL CONDITIONS AND DIMENSIONS BEFORE EXECUTING ANY WORK. THIS DOCUMENT IS THE SOLE PROPERTY OF ALAN BELL ARCHITECT AND SHALL NOT BE COPIED IN WHOLE OR IN PART WITHOUT EXPRESSED WRITTEN CONSENT FROM ALAN BELL ARCHITECT.

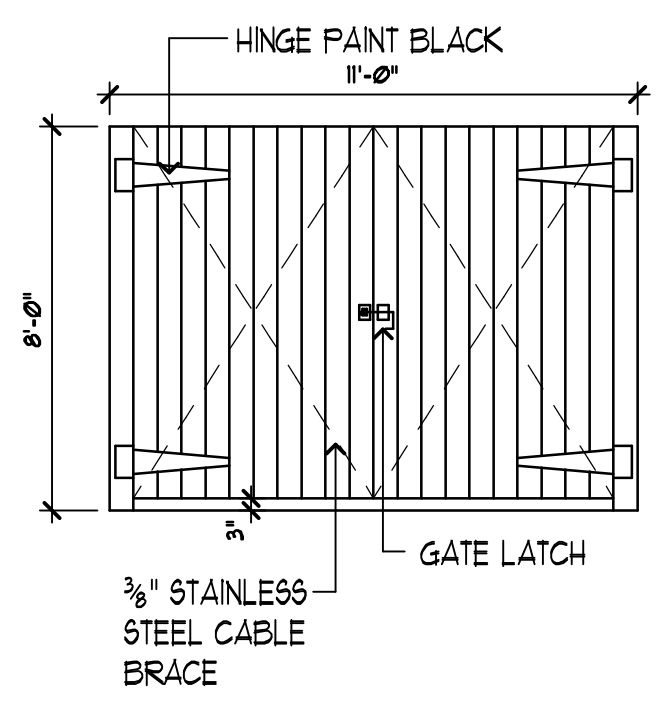


DATE: MARCH 11, 2010
 SCALE: AS NOTED
 JOB NO.: 08034-HII

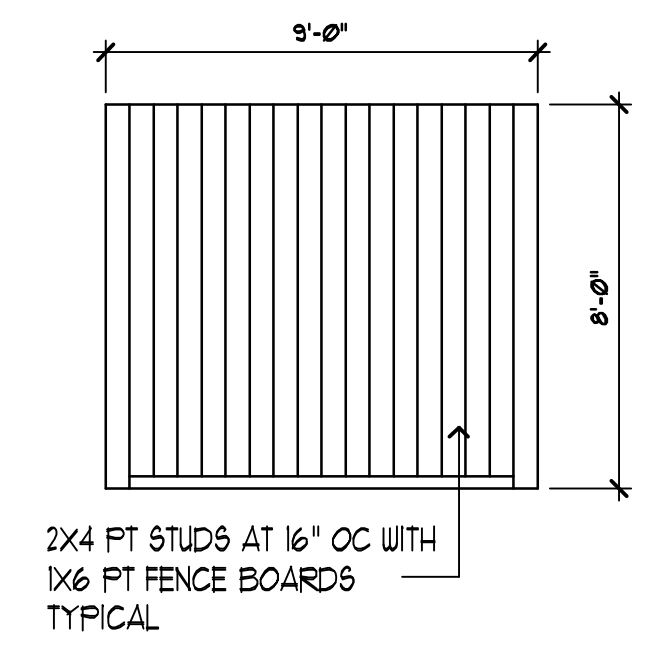
SHEET
 A-1A
 OF 11 SHEETS



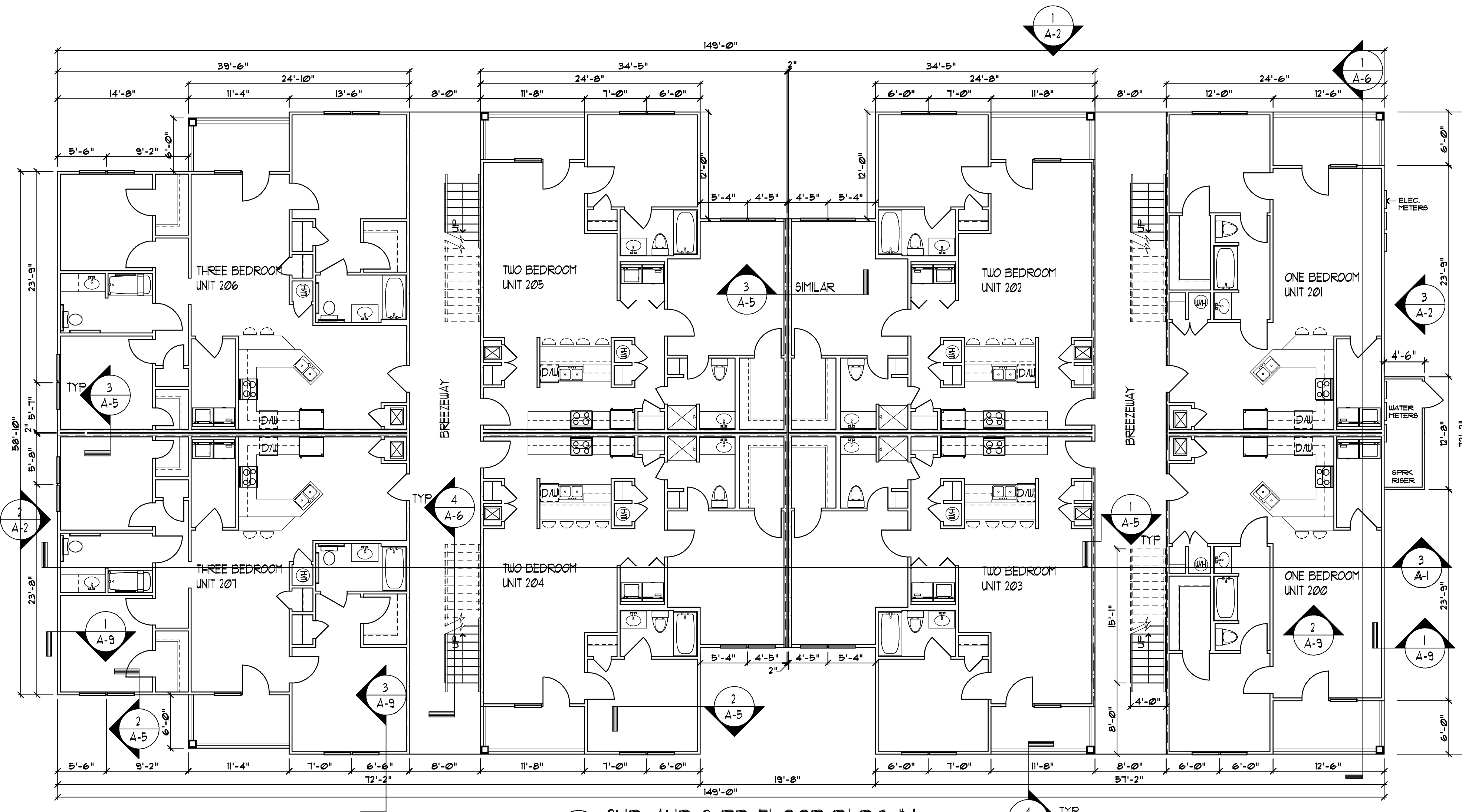
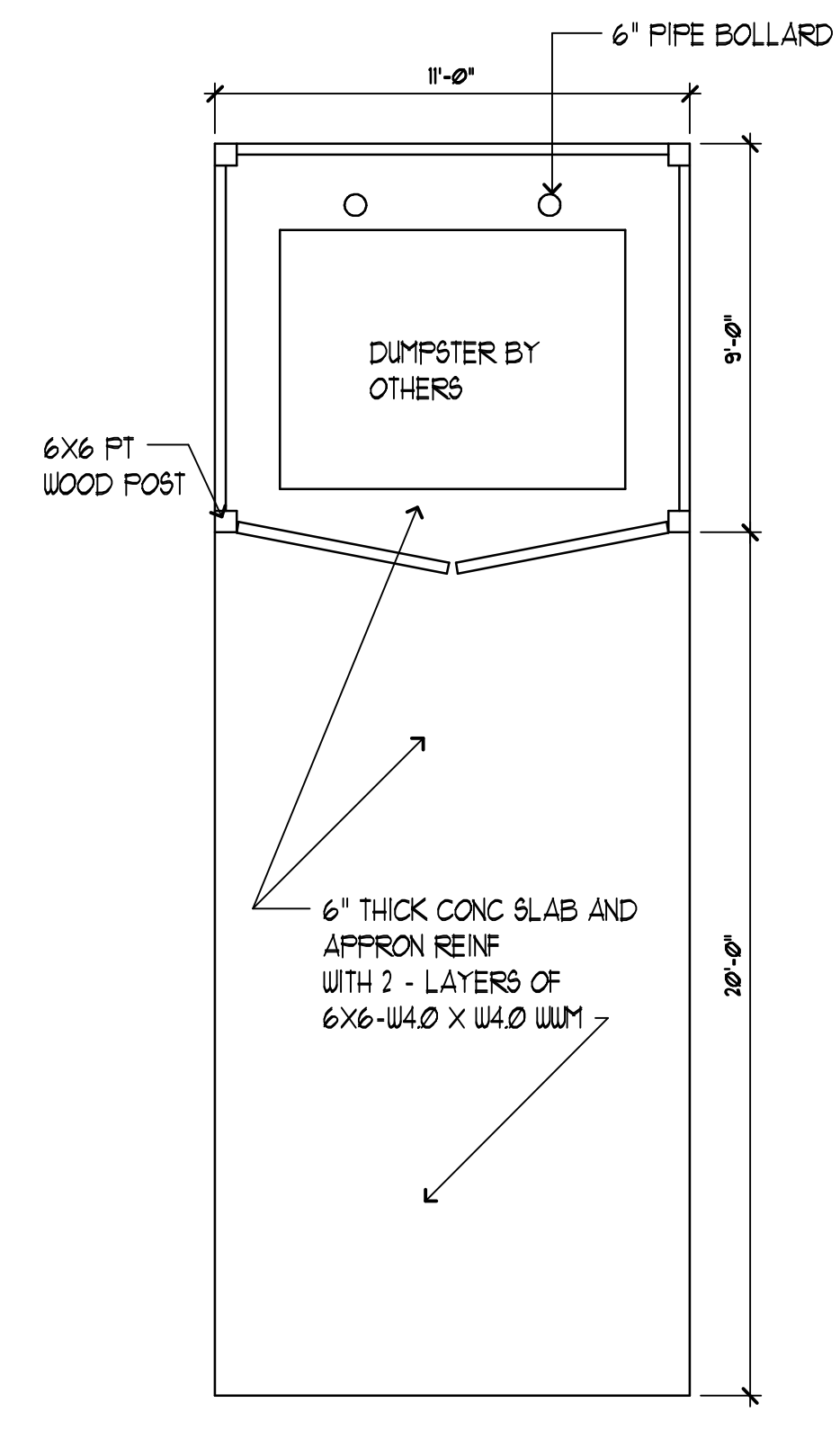
5 PIPE BOLLARD DETAIL
 A-1A 1/2"=1'-0"



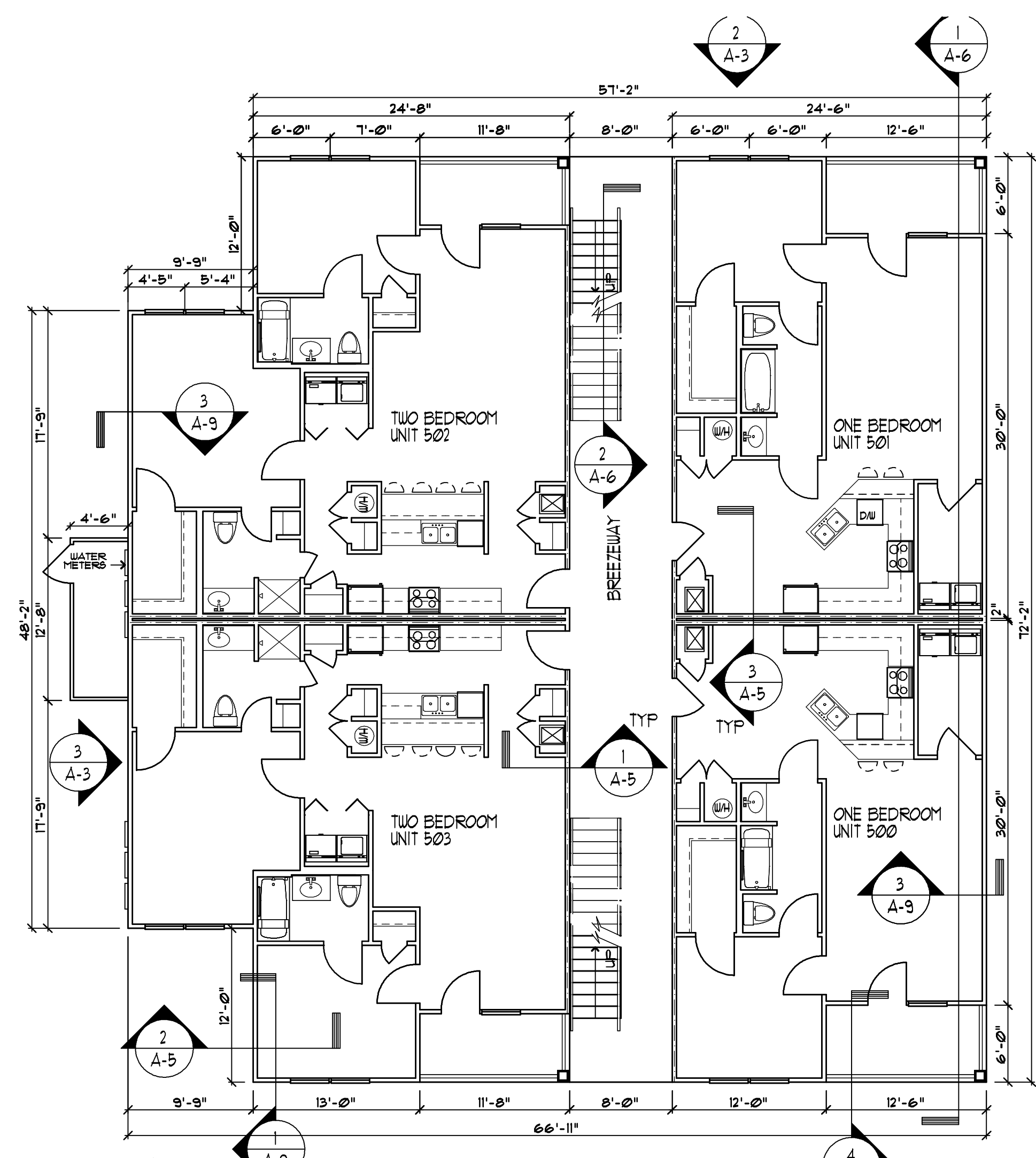
4 DUMPSTER ELEVATION
 A-1A 1/4"=1'-0"



3 DUMPSTER PLAN
 A-1A SEE CIVIL FOR LOCATIONS 1/4"=1'-0"



1 2ND AND 3RD FLOOR BLDG #1
 A-1A THIRD FLOOR NUMBERS 300 THRU 307 1/8"=1'-0"



2 2ND AND 3RD FLOOR BLDG #2
 A-1A THIRD FLOOR NUMBERS 600 THRU 603 1/8"=1'-0"