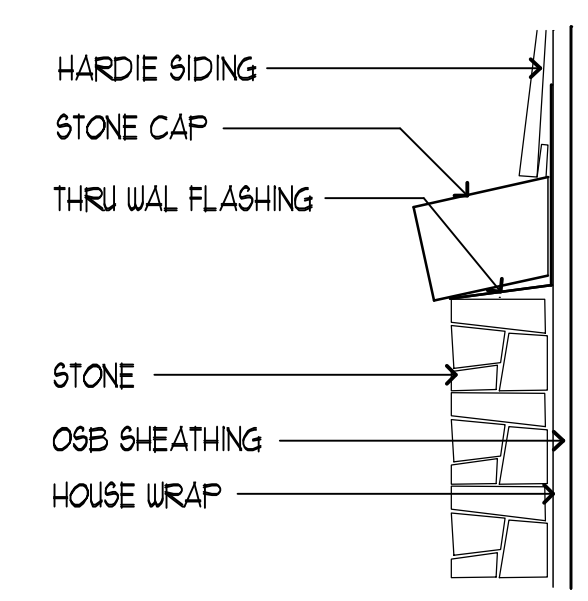
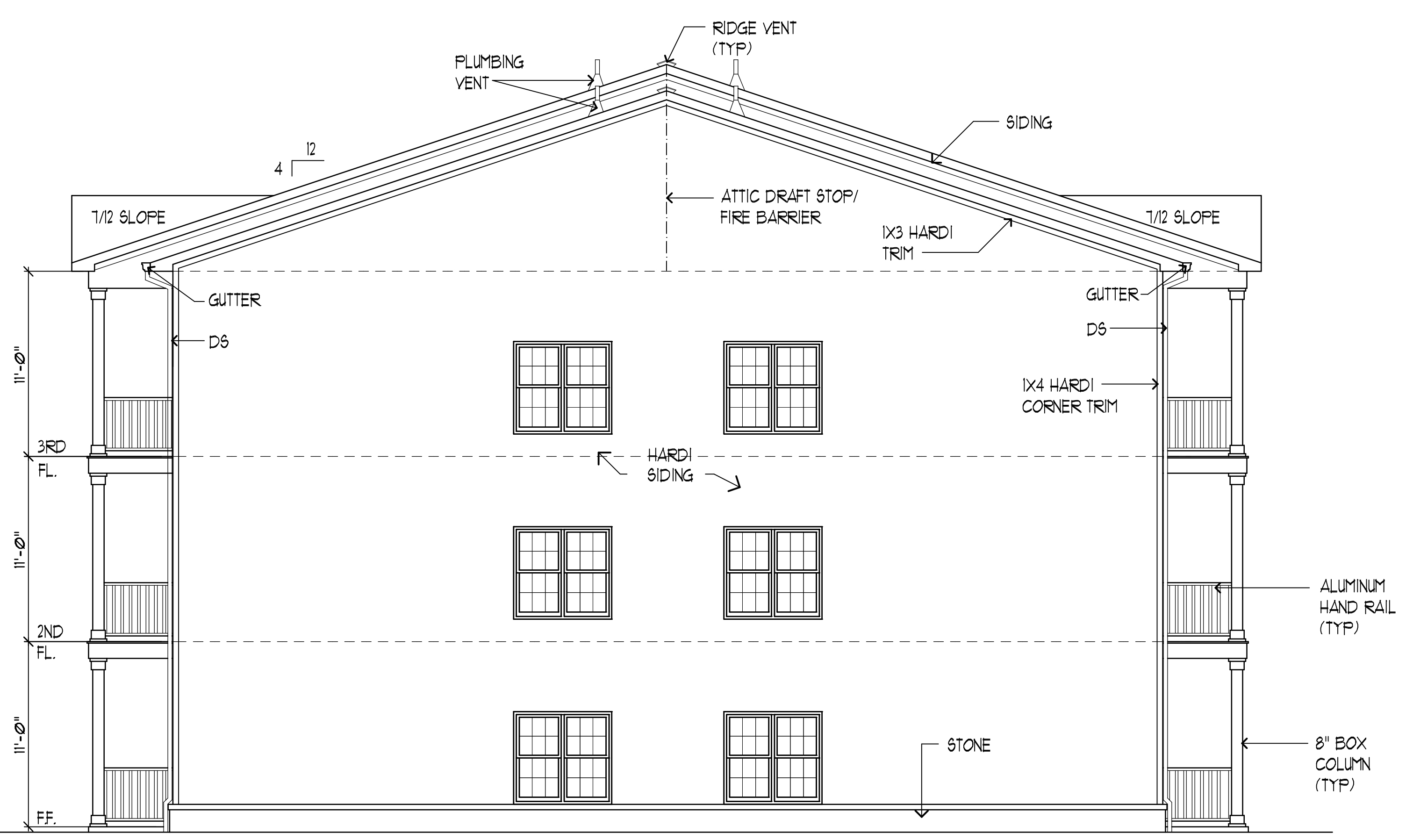




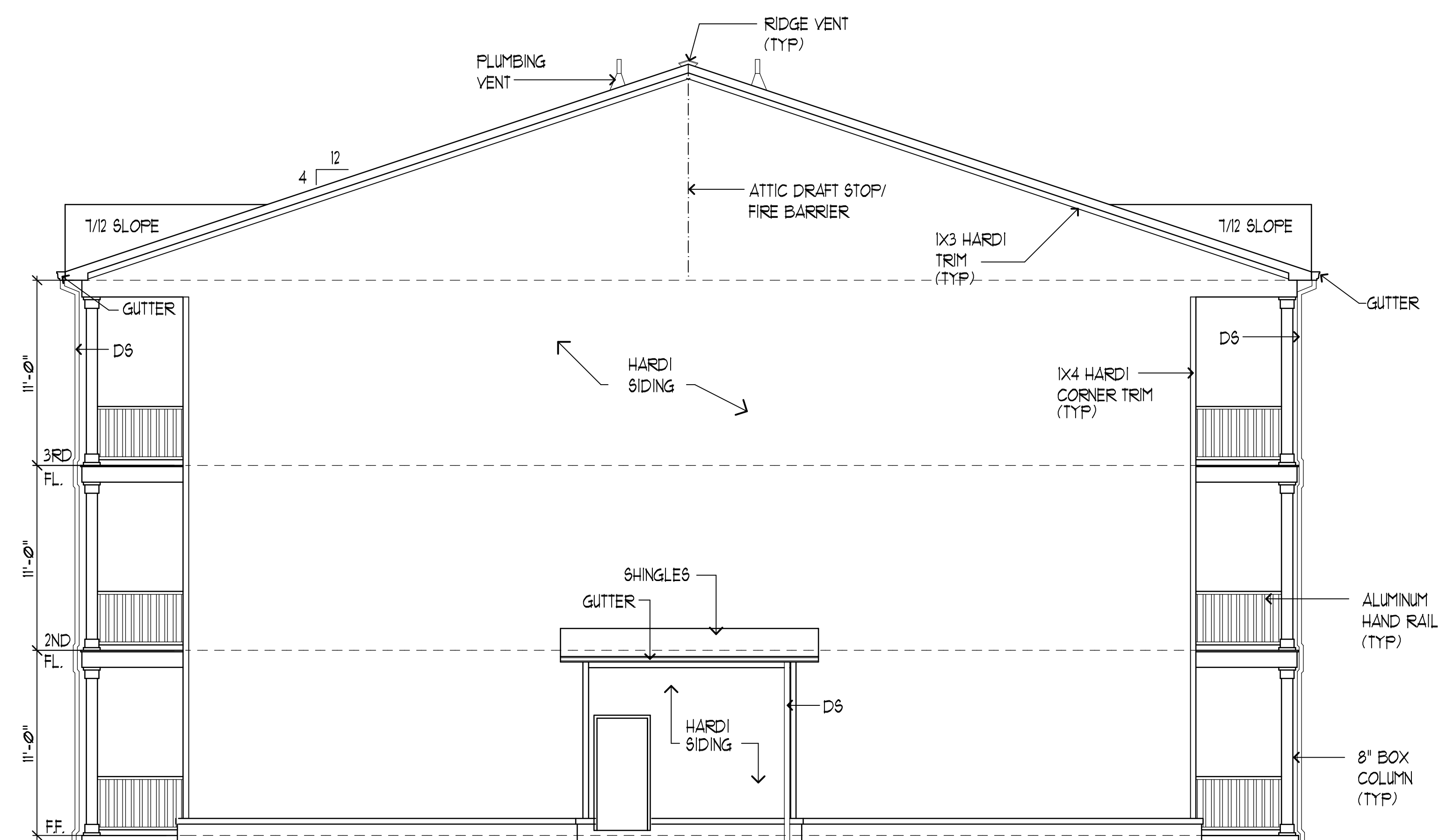
1 BUILDING #1 ELEVATION
 A-2 OTHER SIDE SAME BUT OPPOSITE HAND
 1/8" = 1'-0"



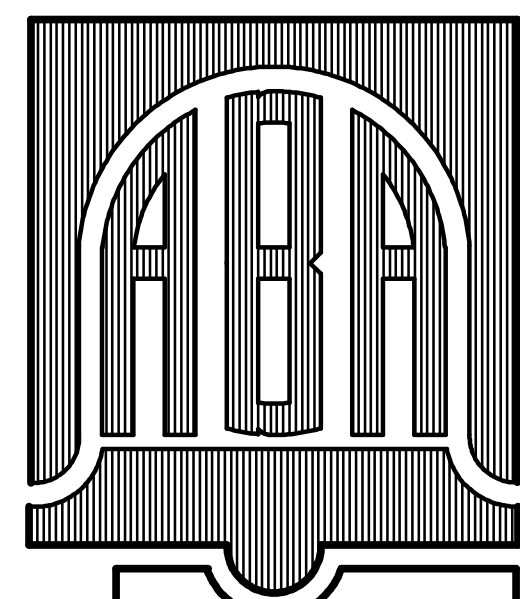
4 SIDING TO STONE DTL
 A-2
 1/2" = 1'-0"



2 END ELEVATION BLDG #1
 A-2
 3/16" = 1'-0"



3 END ELEVATION BLDG #1
 A-2
 3/16" = 1'-0"



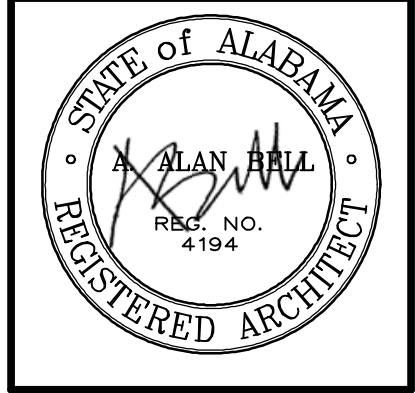
ALAN BELL ARCHITECT INC
 ARCHITECTURE, ENGINEERING, PLANNING
 ASSOCIATES
 MARK SUTHERLAND, CLAS BYKINS
 LORI MOON, LARRY TRANSTUE, ADAM LONG
 alanbellarchitect.com
 211 GORDON ST
 BREMEN, GA
 770-537-8856

8 EAST 4TH AVE
 ROME, GA
 CARROLLTON, GA
 706-232-2256

REVISIONS	BY

NEW APARTMENTS FOR
PIER POINT
 LINCOLN, ALABAMA

CONTRACTOR SHALL VERIFY ALL CONDITIONS AND DIMENSIONS BEFORE EXECUTING ANY WORK. THIS DOCUMENT IS THE SOLE PROPERTY OF ALAN BELL ARCHITECT AND SHALL NOT BE COPIED IN WHOLE OR IN PART WITHOUT EXPRESSED WRITTEN CONSENT FROM ALAN BELL ARCHITECT.



DATE: MARCH 11, 2010
 SCALE: AS NOTED
 JOB NO.: 08034-HII
 SHEET
 A-2
 OF 11 SHEETS