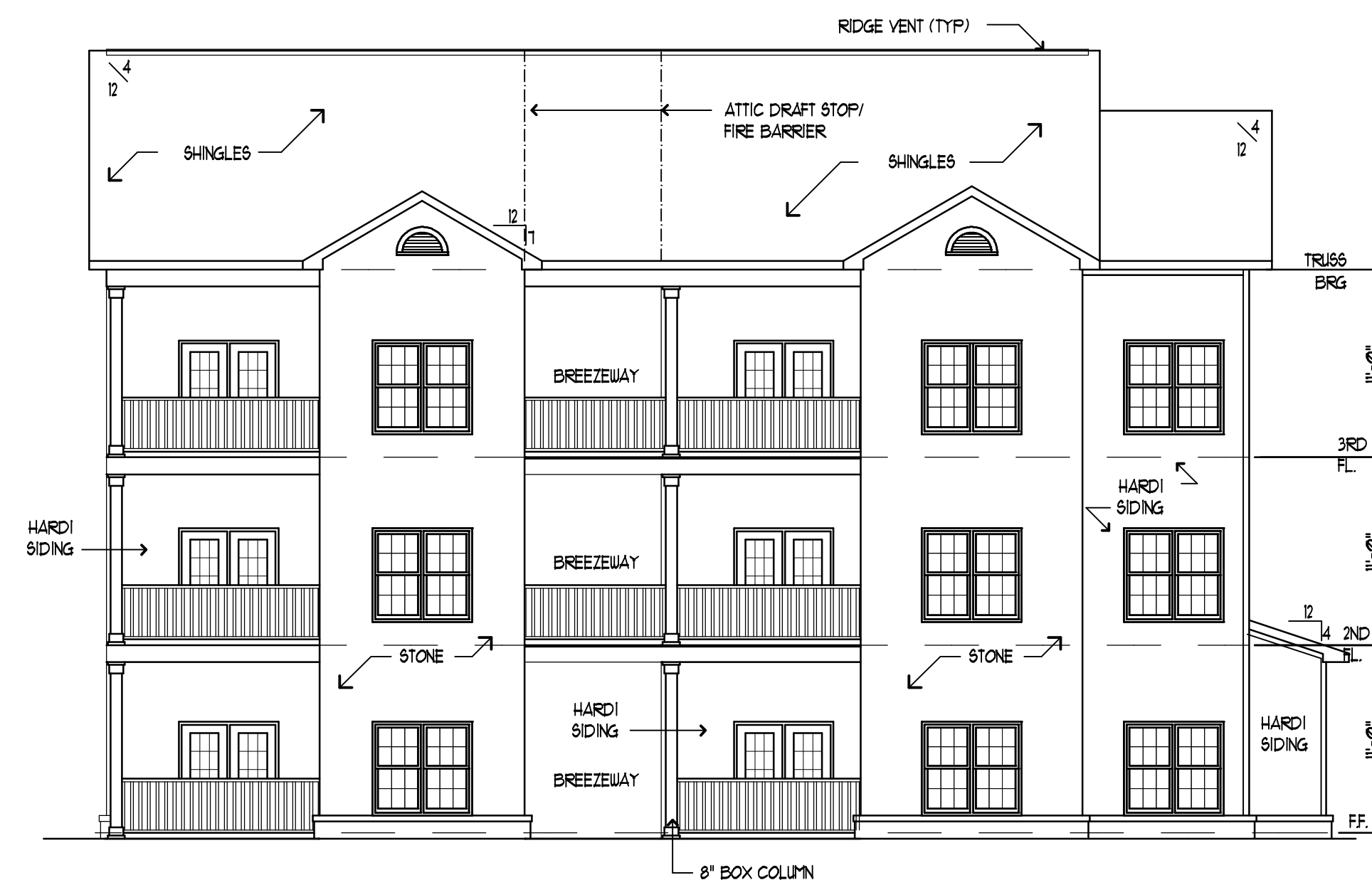
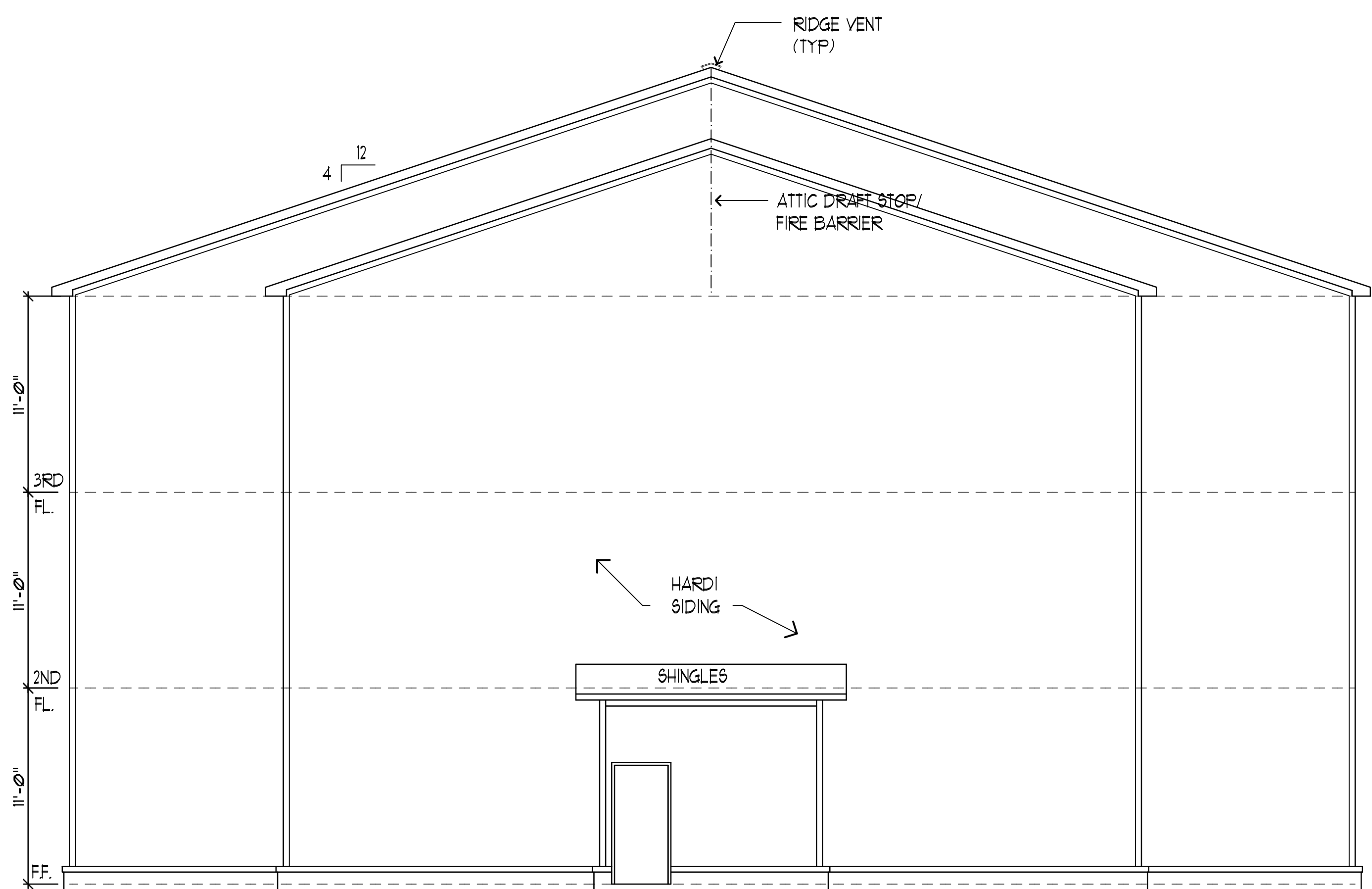


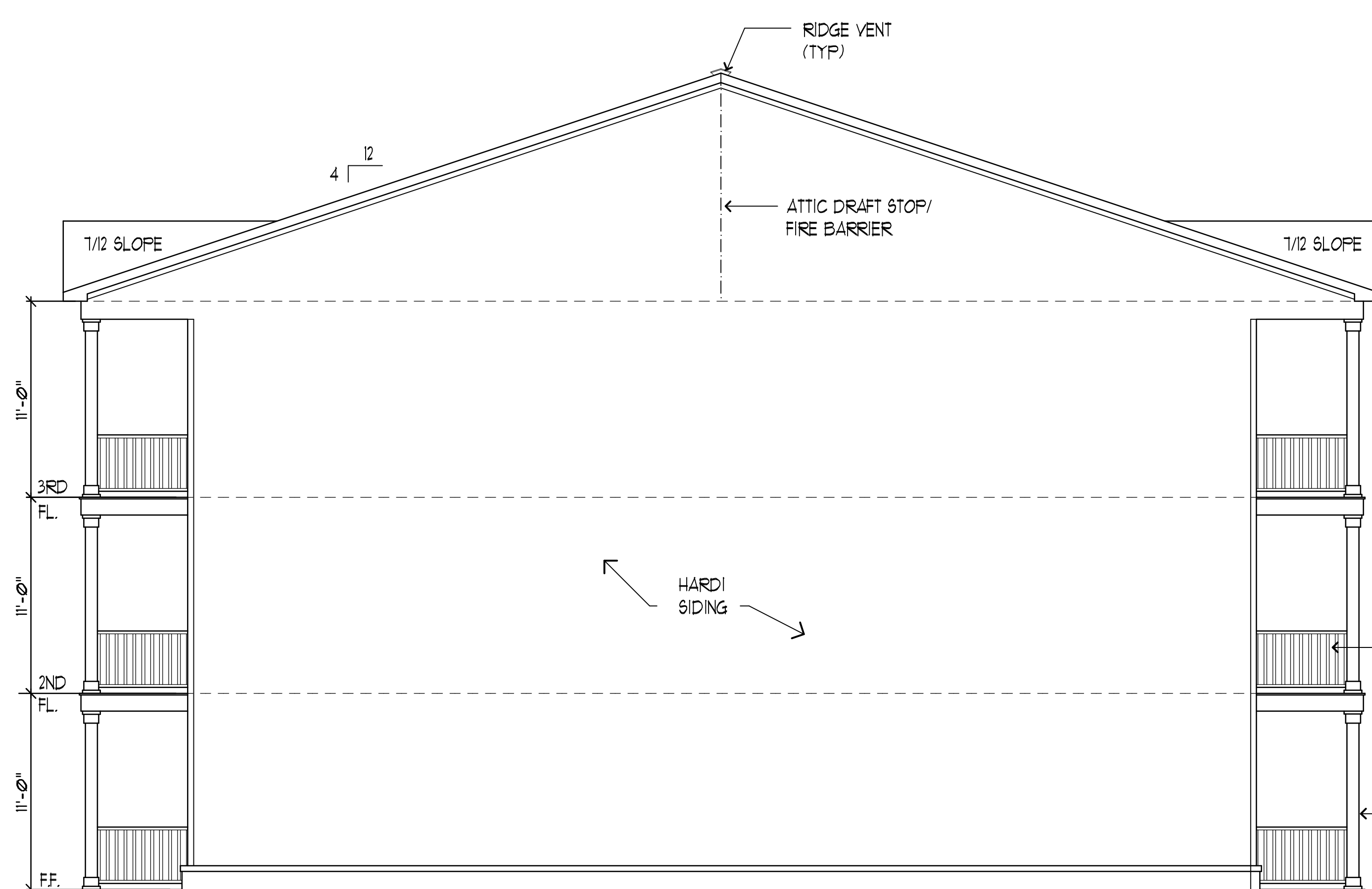
1 LAKE SIDE BLDG # 2  
A-3 1/8"=1'-0"



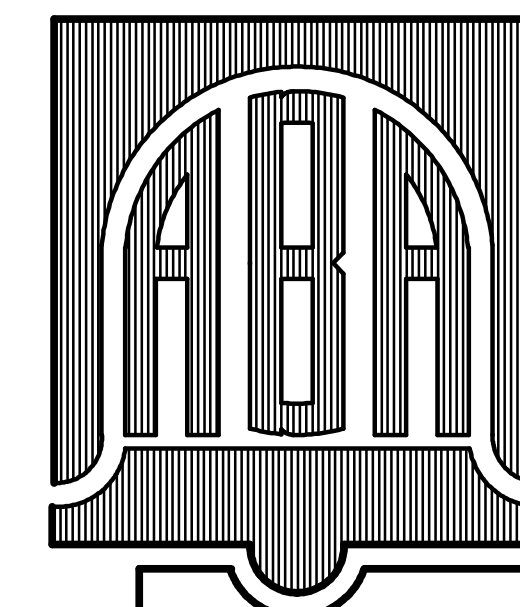
2 PARKING SIDE BLDG # 2  
A-3 1/8"=1'-0"



3 END ELEVATION BUILDING # 2  
A-3 3/16"=1'-0"



4 END ELEVATION BLDG # 2  
A-3 3/16"=1'-0"



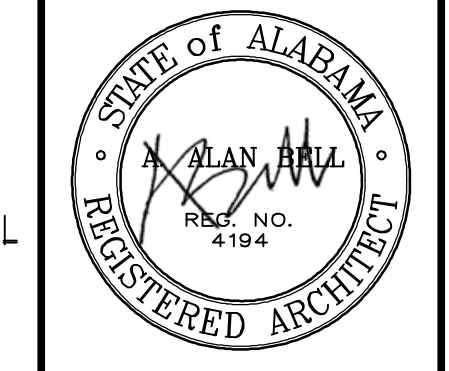
**ALAN BELL ARCHITECT INC**  
 ARCHITECTURE, ENGINEERING, PLANNING  
 ASSOCIATES  
 MARK SMITH, DOUGLAS ELKINS  
 LORI MOON, LARRY TEASDIE, ADAM LONG  
 alanbellarchitect.com  
 211 GORDON ST  
 BREMEN, GA 30108  
 770-537-8866

6 EAST 4TH AVE  
 ROME, GA 30161  
 706-536-2266

REVISIONS	BY

NEW APARTMENTS FOR  
**PIER POINT**  
 LINCOLN, ALABAMA

CONTRACTOR SHALL VERIFY ALL CONDITIONS AND DIMENSIONS BEFORE EXECUTING ANY WORK. THIS DOCUMENT IS THE SOLE PROPERTY OF ALAN BELL ARCHITECT AND SHALL NOT BE COPIED IN WHOLE OR IN PART WITHOUT EXPRESSED WRITTEN CONSENT FROM ALAN BELL ARCHITECT.



DATE: MARCH 11, 2010  
 SCALE: AS NOTED  
 JOB NO.: 08034-HII  
 SHEET

A-3  
 OF 11 SHEETS