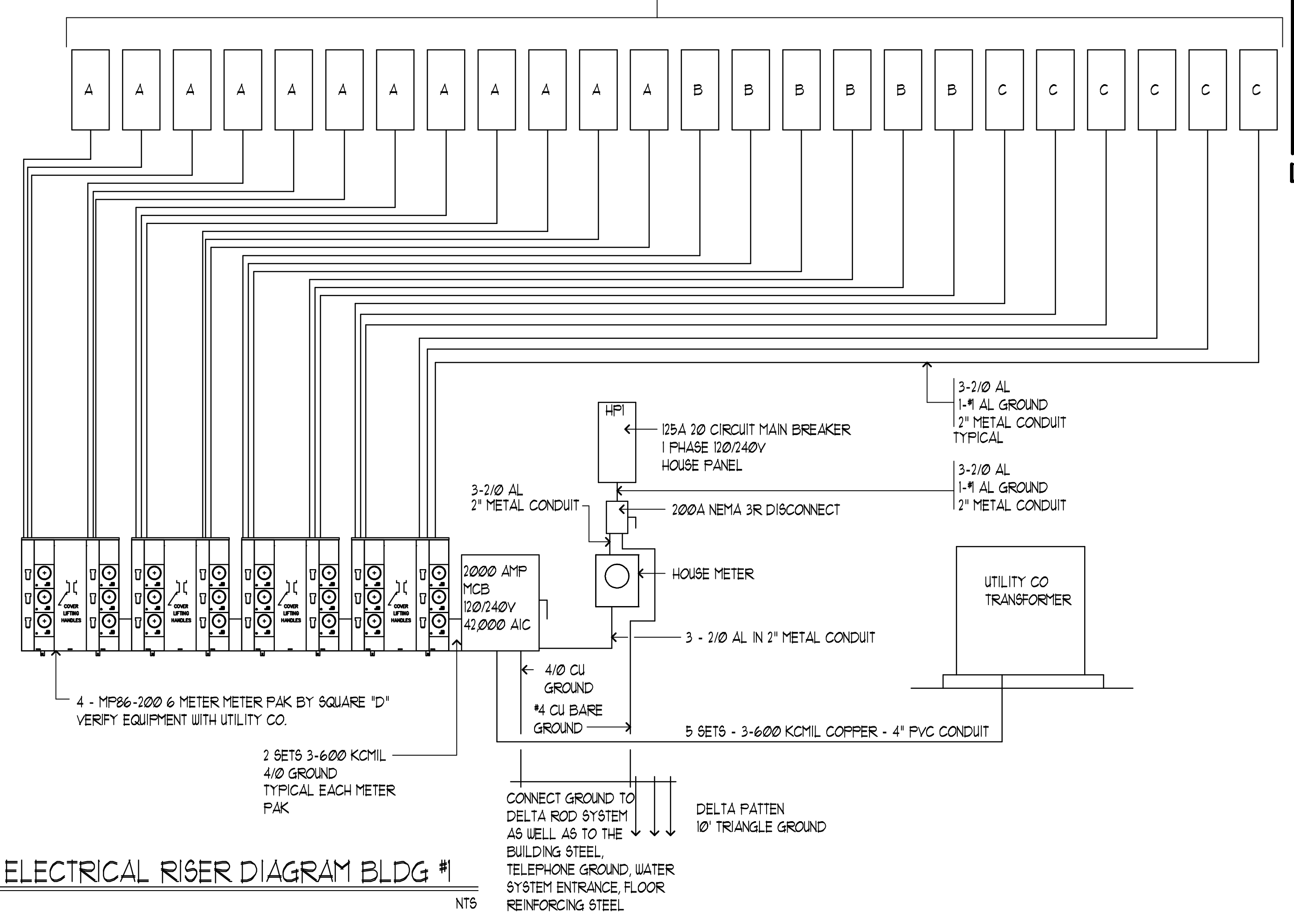
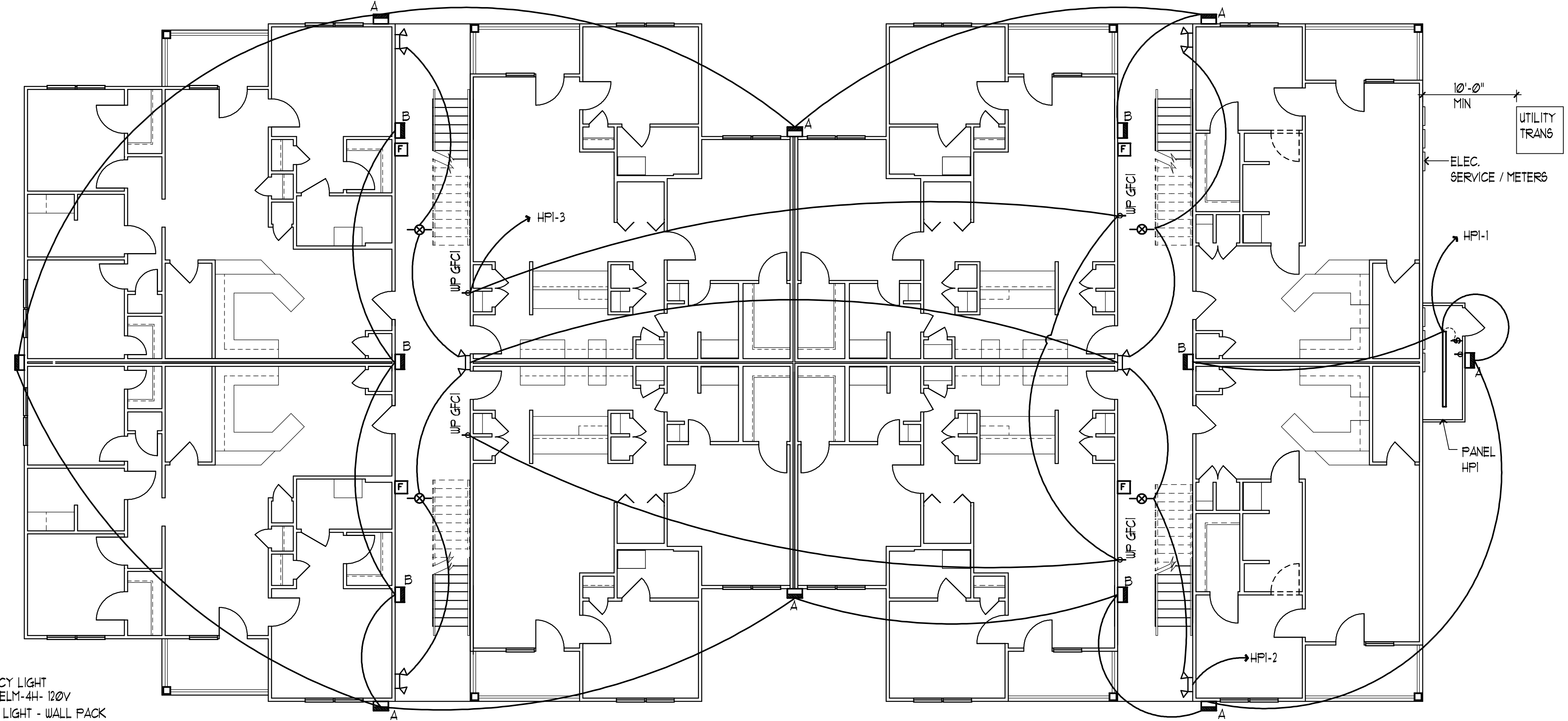


24 - 150A 40 CIRCUIT MAIN BREAKER
1 PHASE 120/240V
PANELS

ELECTRICAL PANEL SCHEDULE											
PANEL	HP1	TYPE	PHASE	MAINS	125A, MCB	VOLTAGE	120/240				
CKT	CIRCUIT DESIGNATION	AMPS	POLES	WIRE SIZE	LOAD (WATTS)	CKT	CIRCUIT DESIGNATION	AMPS	POLES	WIRE SIZE	LOAD (WATTS)
1	EXTERIOR LIGHTS	20	1	12	850	2	EMERGENCY LIGHTS	20	1	12	850
3	EXTERIOR GFCI RECEPTACLE	20	1	12	850	4	EMERGENCY LIGHTS	20	1	12	850
5	EXTERIOR LIGHTS	20	1	12	850	6	EMERGENCY LIGHTS	20	1	12	850
7	EXTERIOR GFCI RECEPTACLE	20	1	12	850	8					
9	EXTERIOR LIGHTS	20	1	12	850	10					
11	EXTERIOR GFCI RECEPTACLE	20	1	12	850	12					
13						14					
15						16					
17						18					
19						20					
COLUMN LOAD TOTAL =					5100	COLUMN LOAD TOTAL =					2550
TOTAL CONNECTED LOAD = 1650 WATTS ÷ 240 = 3128 AMPS											

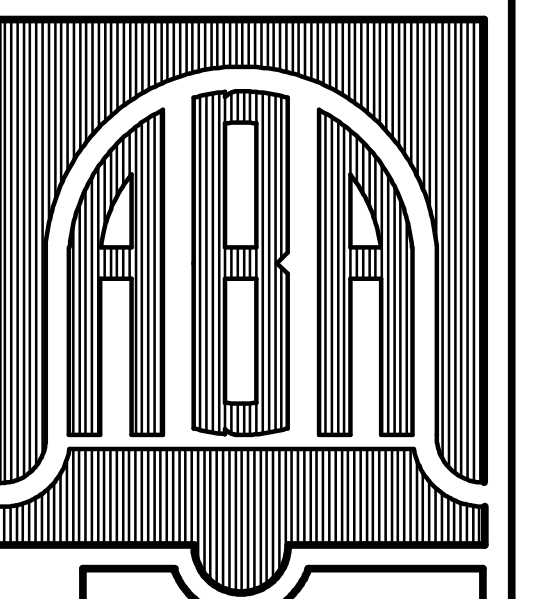


2 ELECTRICAL RISER DIAGRAM BLDG #1
E-2 NTS



1 HOUSE LIGHTING BLDG #1
E-2

- LEGEND
- EMERGENCY LIGHT
LITHONIA ELM-4H-120V
 - SECURITY LIGHT - WALL PACK
250W HIGH PRESS. SODIUM
 - EXIT LIGHT
LITHONIA LQ15W3R20/21ELN-ELAUGEXT
 - 8' 2" FLUORESCENT STRIP FIXTURE
(MOUNT OR HANG AS REQ'D)
 - SECURITY LIGHT - WALL PACK
100W METAL HALIDE
 - PULL STATION



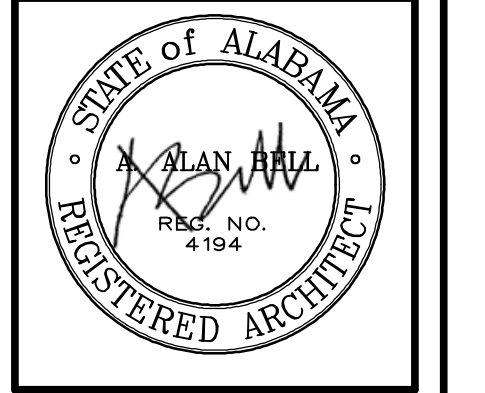
ALAN BELL ARCHITECT Inc
ARCHITECTURE, ENGINEERING, PLANNING
ASSOCIATES
MARK SMITH, DOUGLAS ELKINS
LORI MOON, LARRY TRANSTUE, ADAM LONG
alanbellarchitect.com
211 GORDON ST
BREMEN, GA 30108
770-537-8856

6 EAST 4TH AVE
ROME, GA 30165
706-232-8256

REVISIONS	BY

NEW APARTMENTS FOR
PIER POINT
LINCOLN, ALABAMA

CONTRACTOR SHALL VERIFY ALL CONDITIONS AND DIMENSIONS BEFORE EXECUTING ANY WORK. THIS DOCUMENT IS THE SOLE PROPERTY OF ALAN BELL ARCHITECT AND SHALL NOT BE COPIED IN WHOLE OR IN PART WITHOUT EXPRESSED WRITTEN CONSENT FROM ALAN BELL ARCHITECT.



DATE: MARCH 11, 2010
SCALE: AS NOTED
JOB NO.: 08034-HII
SHEET
E-2
OF 3 SHEETS