

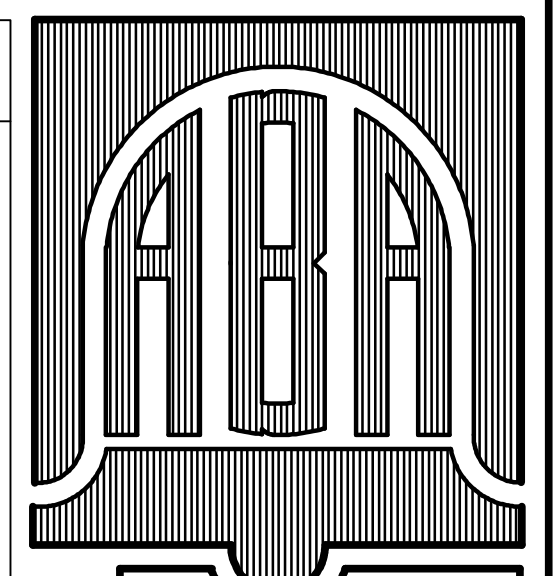
## HVAC GENERAL NOTES

- THE CONTRACTOR SHALL PROVIDE A COMPLETE HVAC SYSTEM TO INCLUDE ALL LABOR, MATERIALS, TOOLS AND EQUIPMENT FOR A COMPLETE AND FUNCTIONAL SYSTEM INCLUDING ALL NECESSARY APPURTENANCES CUSTOMARILY INCLUDED IF NOT SPECIFICALLY CALLED OUT.
- ALL WORK SHALL BE PERFORMED IN COMPLIANCE WITH ALL LOCAL, STATE AND FEDERAL CODES, LAWS AND ORDINANCES.
- INSTALL ALL EQUIPMENT AND MATERIALS PER MANUFACTURER'S RECOMMENDATIONS.
- THE CONTRACTOR SHALL VISIT THE JOB SITE AND THOROUGHLY FAMILIARIZE HIMSELF WITH ALL DETAILS OF THE WORK AND THE EXISTING CONDITIONS AND SHALL VERIFY DIMENSIONS AND CLEARANCES AND BE ASSURED THAT THE EQUIPMENT PURCHASED WILL FIT INTO THE AVAILABLE SPACE.
- THE CONTRACTOR SHALL REVIEW ALL DRAWINGS BEFORE FABRICATING OR INSTALLING DUCTWORK OR EQUIPMENT TO AVOID ANY CONFLICTS.
- ALL DUCTWORK SHALL BE FABRICATED OF GALVANIZED STEEL OF THICKNESS AND GAUGES TO CONFORM TO SMACNA DUCT CONSTRUCTION STANDARDS.
- ALL LOW PRESSURE FLEXIBLE DUCT SHALL BE CONNECTED TO LOW PRESSURE DUCT WITH SPIN-IN FITTINGS AND MANUAL DAMPERS.
- LOW PRESSURE FLEX DUCT SHALL BE A MAXIMUM OF 1 FEET LONG AND SHALL BE SIZED AS FOLLOWS:  

CFM	FLEXDUCT DIAMETER
0 - 100	6"
101 - 200	8"
201 - 300	10"
301 - 400	12"
- ALL SUPPLY DUCTWORK SHALL BE EXTERNALLY INSULATED WITH 2" THICK FIBERGLASS DUCT INSULATION WITH ALUMINUM FOIL BACKING EXCEPT FOR SUPPLY DUCT IN MECH. ROOMS AND ABOVE VESTIBULE WHICH SHALL BE INTERNALLY LINERED WITH 1" FIBERGLASS ACCUSTICAL DUCT LINERS.
- PROVIDE FLEXIBLE DUCT CONNECTIONS AT EACH AIR HANDLING UNIT.
- BALANCE ALL AIR SYSTEMS TO PRODUCE THE VOLUMES AND QUANTITIES SHOWN ON DRAWINGS OR SPECIFIED.
- INSTALL THERMOSTATS AT 42" AFF.
- PROVIDE AIR EXTRACTORS AS REQUIRED FOR AIR BALANCING.
- THE CONTRACTOR SHALL VERIFY ALL ELECTRICAL CHARACTERISTICS WITH ELECTRICAL DRAWINGS BEFORE PURCHASING EQUIPMENT.
- INSTALL FIRE DAMPERS IN ALL DUCTS PASSING THROUGH FIRE RATED WALLS OR CEILINGS.
- ALL ELBOWS SHALL BE PROVIDED WITH DOUBLE RADIUS TURNING VANES.
- SMOKE DETECTORS SHALL BE THE TYPE REQUIRED BY CODE
- THE MECHANICAL CONTRACTOR SHALL INSTALL A COMPLETE AND OPERATING SYSTEM. THE DRAWINGS ARE SCHEMATIC IN NATURE AND ARE NOT INTENDED TO SHOW EVERY DETAIL. THE CONTRACTOR SHALL INSTALL A COMPLETE SYSTEM REGARDLESS OF WHETHER IT IS SHOWN IN ITS ENTIRITY ON THE PLANS
- INSTALL FIRE DAMPERS WHERE DUCT WORK PENETRATES FIRE RATED ASSEMBLIES.

## H.V.A.C. SCHEDULE

UNIT 1	MANUFACTURER	MAGIC PAK
	MODEL No.	5MHP410101F
	SUPPLY AIR CFM	600
	LINE VOLTAGE	208/230V 1 PHASE
UNIT 2	MANUFACTURER	MAGIC PAK
	MODEL No.	1MHP410241F
	SUPPLY AIR CFM	800
	LINE VOLTAGE	208/230V 1 PHASE
UNIT 3	MANUFACTURER	MAGIC PAK
	MODEL No.	1MHP410301F
	SUPPLY AIR CFM	1000
	LINE VOLTAGE	208/230V 1 PHASE
EF-1 TOILET ROOM EXHAUST FAN - BROAN QTXE020FLT		
THERMOSTAT - RITE TEMP MODEL 6025		



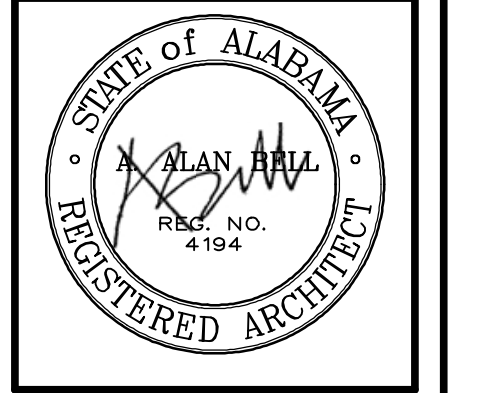
**ALAN BELL ARCHITECT INC**  
 ARCHITECTURE, ENGINEERING, PLANNING  
 ASSOCIATES  
 MARK SMITH, DOUGLAS ELKINS  
 LORI MOON, LARRY TRANAU, ADAM LONG  
 alanbellarchitect.com  
 211 GORDON ST  
 BREMEN, GA  
 770-537-8856

8 EAST 4TH AVE  
 ROME, GA  
 CARROLLTON, GA  
 770-630-8856

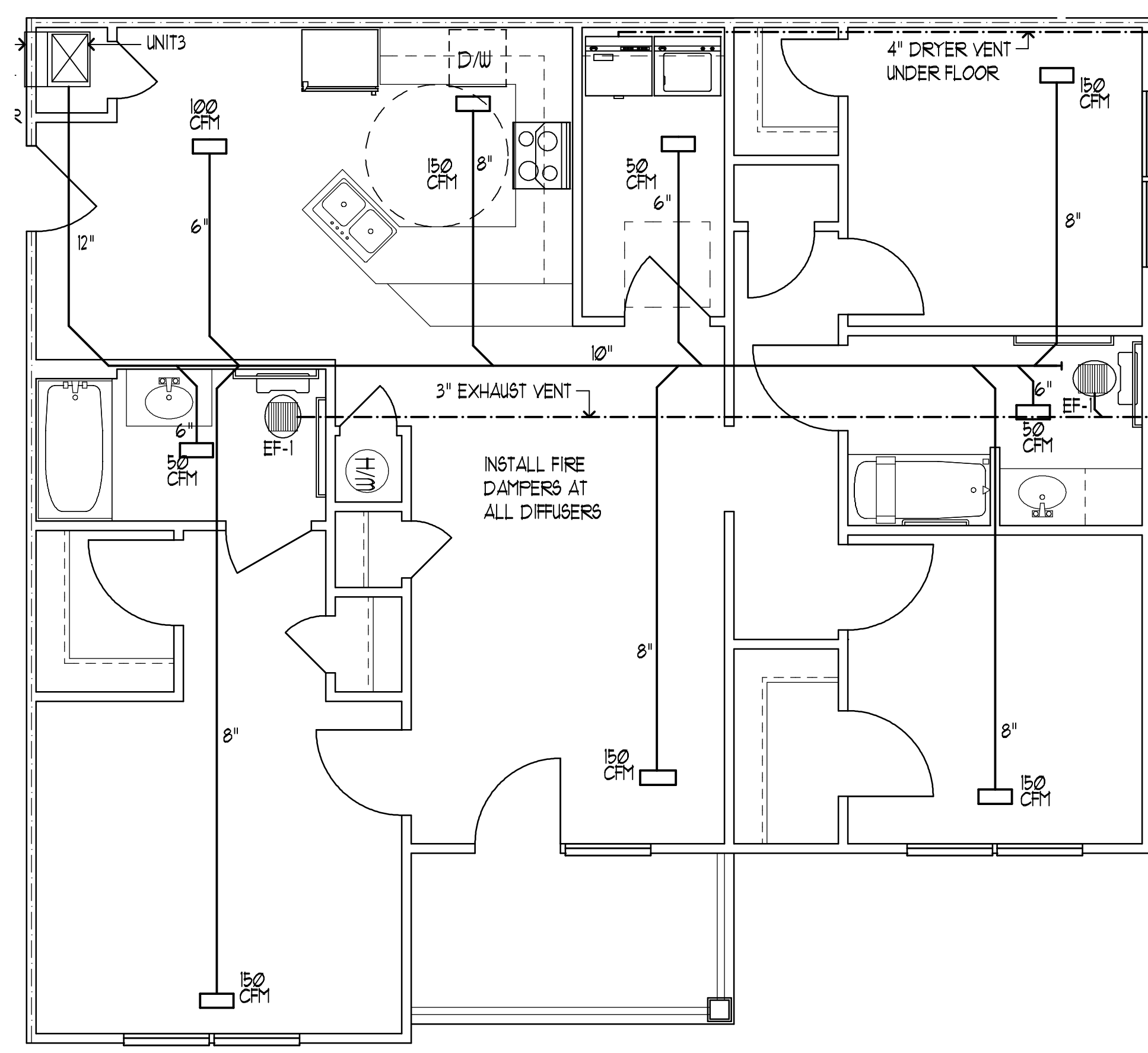
REVISIONS	BY

NEW APARTMENTS FOR  
**PIER POINT**  
 LINCOLN, ALABAMA

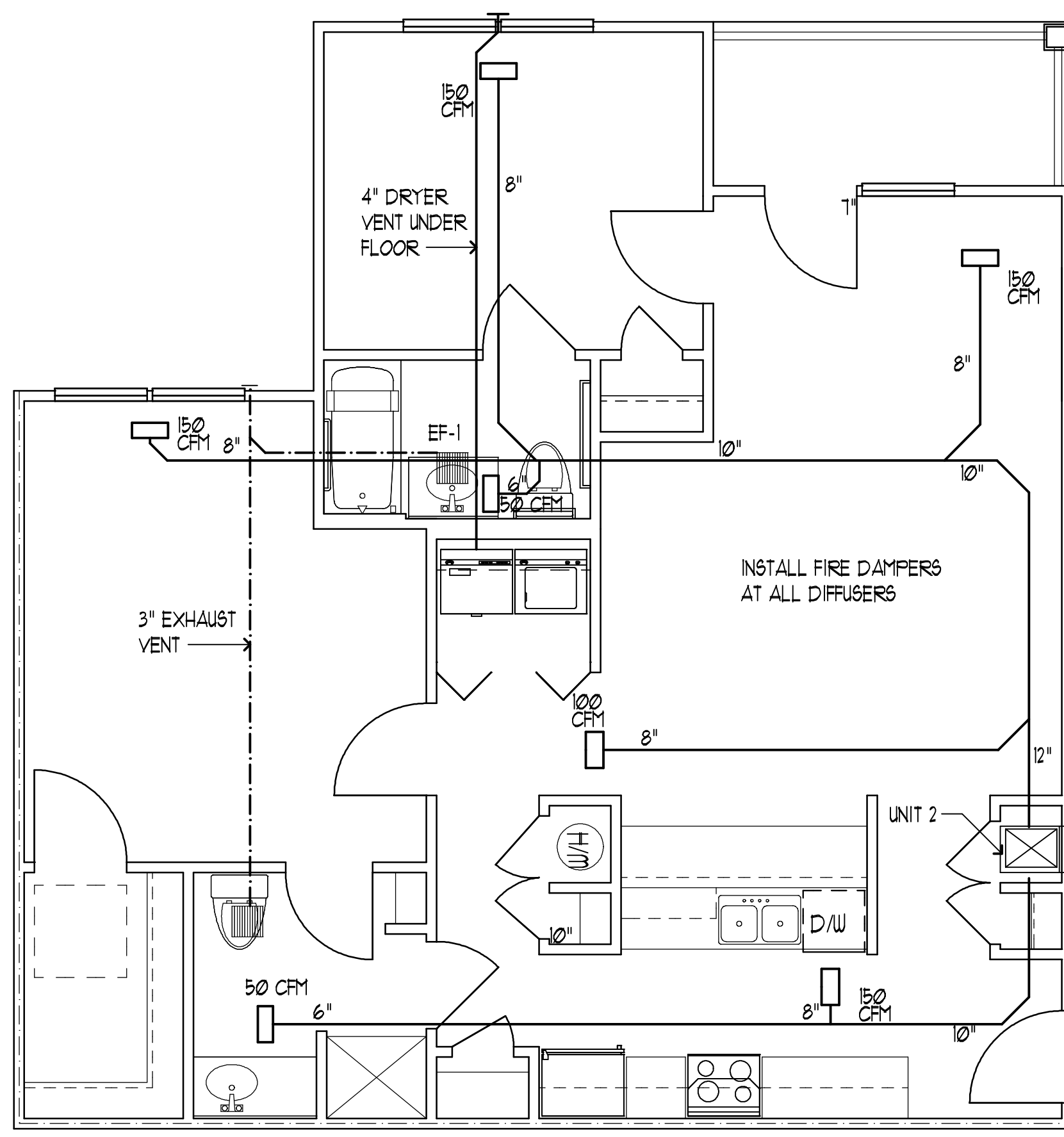
CONTRACTOR SHALL VERIFY ALL CONDITIONS AND DIMENSIONS BEFORE EXECUTING ANY WORK. THIS DOCUMENT IS THE SOLE PROPERTY OF ALAN BELL ARCHITECT AND SHALL NOT BE COPIED IN WHOLE OR IN PART WITHOUT EXPRESSED WRITTEN CONSENT FROM ALAN BELL ARCHITECT.



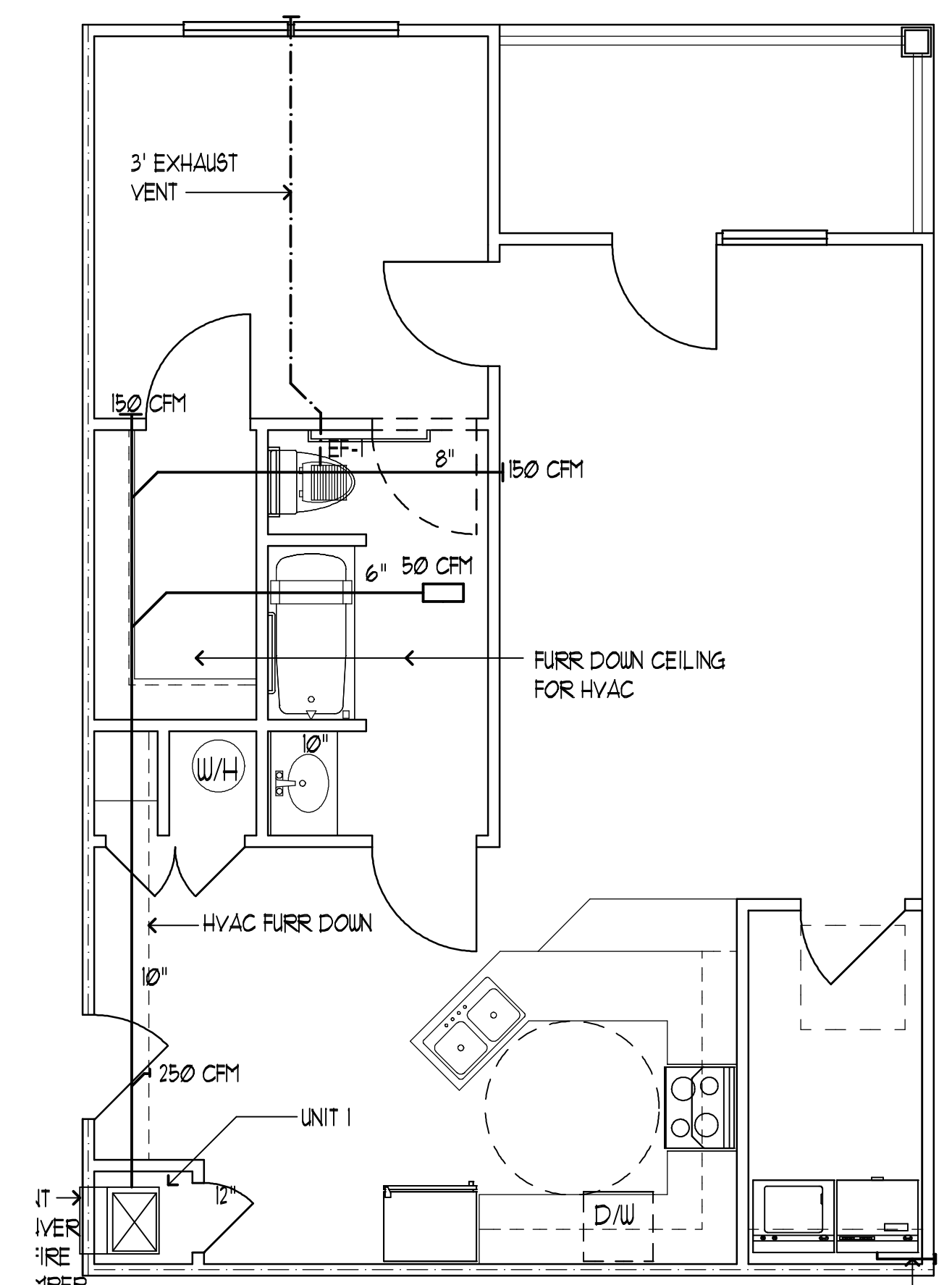
DATE: MARCH 11, 2010  
 SCALE: AS NOTED  
 JOB NO.: 08034-HII  
 SHEET  
**M-1**  
 OF 1 SHEETS



**3 BED HVAC PLAN**  
 1/4" = 1'-0"  
 M-1 INSTALL FIRE DAMPERS WHERE DUCT PENETRATES THE FLOOR CEILING ASSEMBLY



**2 BED HVAC PLAN**  
 1/4" = 1'-0"  
 M-1 INSTALL FIRE DAMPERS WHERE DUCT PENETRATES THE FLOOR CEILING ASSEMBLY



**1 BED HVAC PLAN**  
 1/4" = 1'-0"  
 M-1 INSTALL FIRE DAMPER WHERE DUCT PENETRATES THE FLOOR CEILING ASSEMBLY