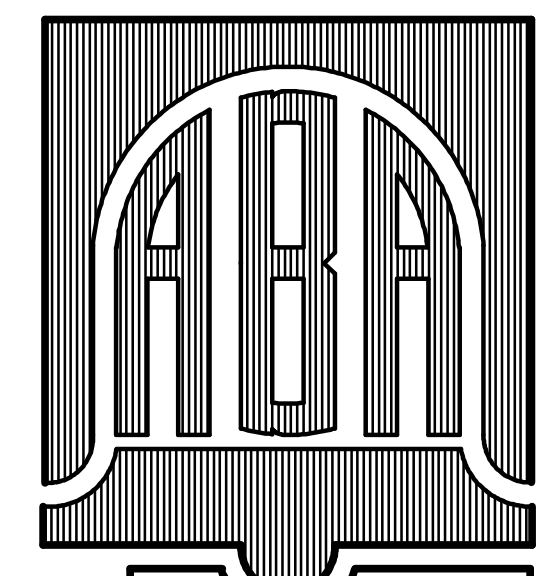


PLUMBING NOTES

- FURNISH ALL LABOR AND MATERIAL AND EQUIPMENT REQUIRED FOR A COMPLETE PLUMBING SYSTEM IN ACCORDANCE WITH ALL NATIONAL, STATE AND LOCAL CODES.
- FURNISH AND INSTALL ALL PLUMBING FIXTURES AND EQUIPMENT AS SHOWN ON THE DRAWINGS.
- FURNISH AND INSTALL ALL SYSTEMS OF SOIL, WASTE, AND VENT PIPING, HOT WATER PIPING, COLD WATER PIPING, AND DRAINAGE PIPING INCLUDING ALL VALVES ETC. AS REQUIRED.
- ALL HOT AND COLD WATER PIPING SMALLER THAN 2 1/2" SHALL BE COPPER TYPE "L" ABOVE GROUND AND TYPE "K" BELOW GROUND.
- CLEANOUT PLUGS SHALL BE INSTALLED IN ACCORDANCE WITH PLUMBING CODE REQUIREMENTS, AT EACH CHANGE IN DIRECTION. CLEANOUTS SHALL BE PLACED IN READILY ACCESSABLE LOCATIONS.
- INSTALL AN ISOLATION VALVE FOR EVERY FIXTURE CONNECTED.
- THOROUGHLY TEST THE ENTIRE SYSTEM PRIOR TO TOTAL COMPLETION.
- INSTALL PRESSURE REDUCING WATER VALVES AS REQUIRED TO MAKE WATER PRESSURE COMPATABLE WITH ALL PLUMBING FIXTURES
- ROUTE ALL POTABLE WATER LINES FROM INDIVIDUAL APARTMENTS TO A CENTRAL METERING STATION AS DIRECTED BY THE OWNER.

PLUMBING FIXTURE SCHEDULE

P-1 - COLONY FIT RIGHT ROUND FRONT - AMERICAN STANDARD 2431.012 5324.018 WHITE SEAT 3/8" ANGLE SUPPLY AND STOP	
P-2 - COLONY FIT RIGHT ROUND FRONT - AMERICAN STANDARD 2436.012 5322.011 WHITE SEAT 3/8" ANGLE SUPPLY AND STOP	
P-3 - WHITE COUNTERTOP LAVATORY - MANSFIELD 249 -4 MAVERICK 1 FAUCET WITH POP-UP DRAIN "P" TRAP WITH CONNECTOR PIECES	
P-4 - KITCHEN SINK	DAYTON MODEL K233224 DOUBLE BOWL STAINLESS STEEL SINK
P-5 - TUB/SHOWER	AQUAGLAS 836033B GROHE SHOWER SYSTEM MODEL 28211 SHOWER SEAT AND GRAB BARS INCLUDED WITH TUB/SHOWER
P-6 - SHOWER	AQUAGLAS 684139B-R/L MOEN FAUCET L-3115 CROME DRAIN
EXPANSION TANK	AMTROL T-5 THERM-X-5PAN
CO - CLEANOUT	- JAY R SMITH 4253-U
HB-1 - HOSE BIB	- JAY R SMITH 5509QT
P-1 - WATER HEATER	PACEMAKER RUJDLAS ENERGY M18R 220 VOLT SINGLE PHASE WITH TWO 4500 WATT ELEMENTS - MODEL PE2-40-2
P-2 - GARAGE DISPOSA	GE MODEL GEFC22E

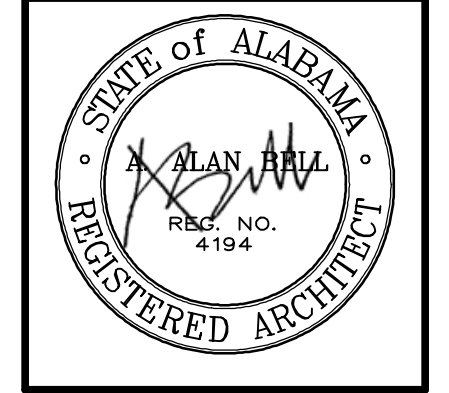


ALAN BELL ARCHITECT Inc
ARCHITECTURE, ENGINEERING, PLANNING
ASSOCIATES
MARK SMITH, DOUGLAS ELKINS
LORI MOON, LARRY TRANSLUE, ADAM LONG
alanbellarchitect.com
8 EAST 4TH AVE
ROME, GA
301 BRADLEY ST
CARROLLTON, GA
770-830-8856
770-537-8856

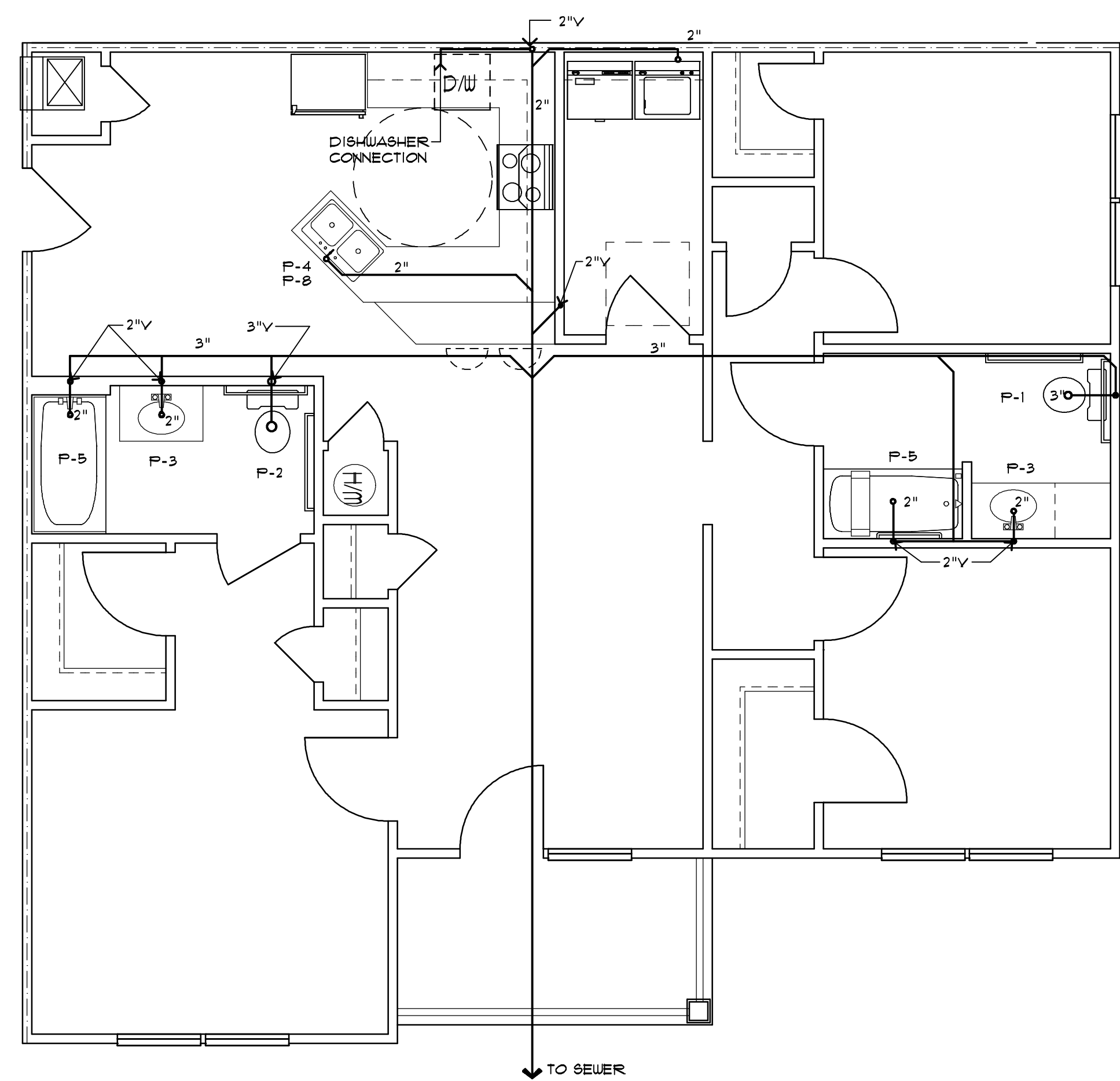
REVISIONS	BY

NEW APARTMENTS FOR
PER PONT
LINCOLN, ALABAMA

CONTRACTOR SHALL VERIFY ALL CONDITIONS AND DIMENSIONS BEFORE EXECUTING ANY WORK. THIS DOCUMENT IS THE SOLE PROPERTY OF ALAN BELL ARCHITECT AND SHALL NOT BE COPIED IN WHOLE OR IN PART WITHOUT EXPRESSED WRITTEN CONSENT FROM ALAN BELL ARCHITECT.

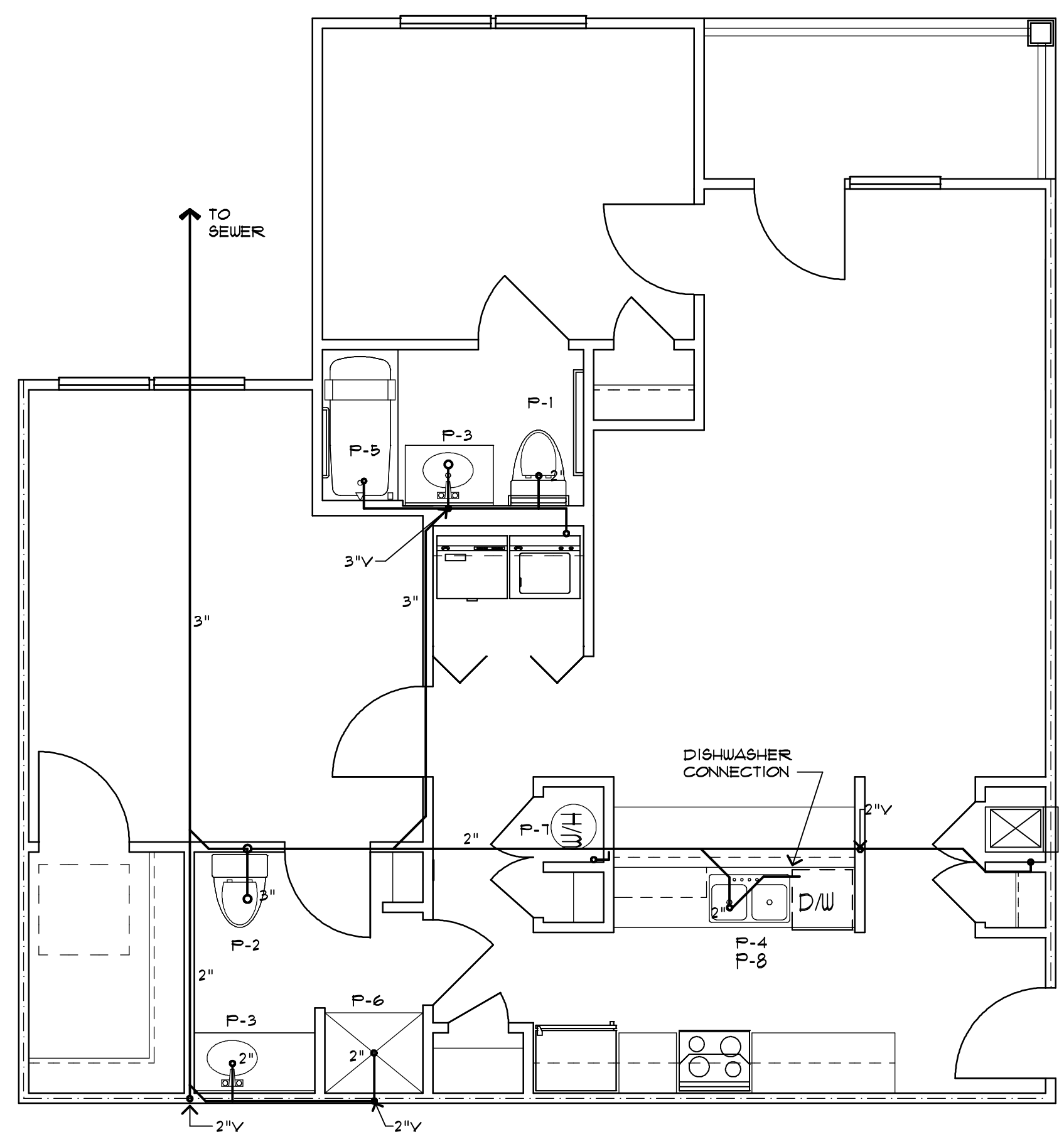


DATE: MARCH 11, 2010
SCALE: AS NOTED
JOB NO.: 06034-HII
SHEET
P-2
OF 3 SHEETS



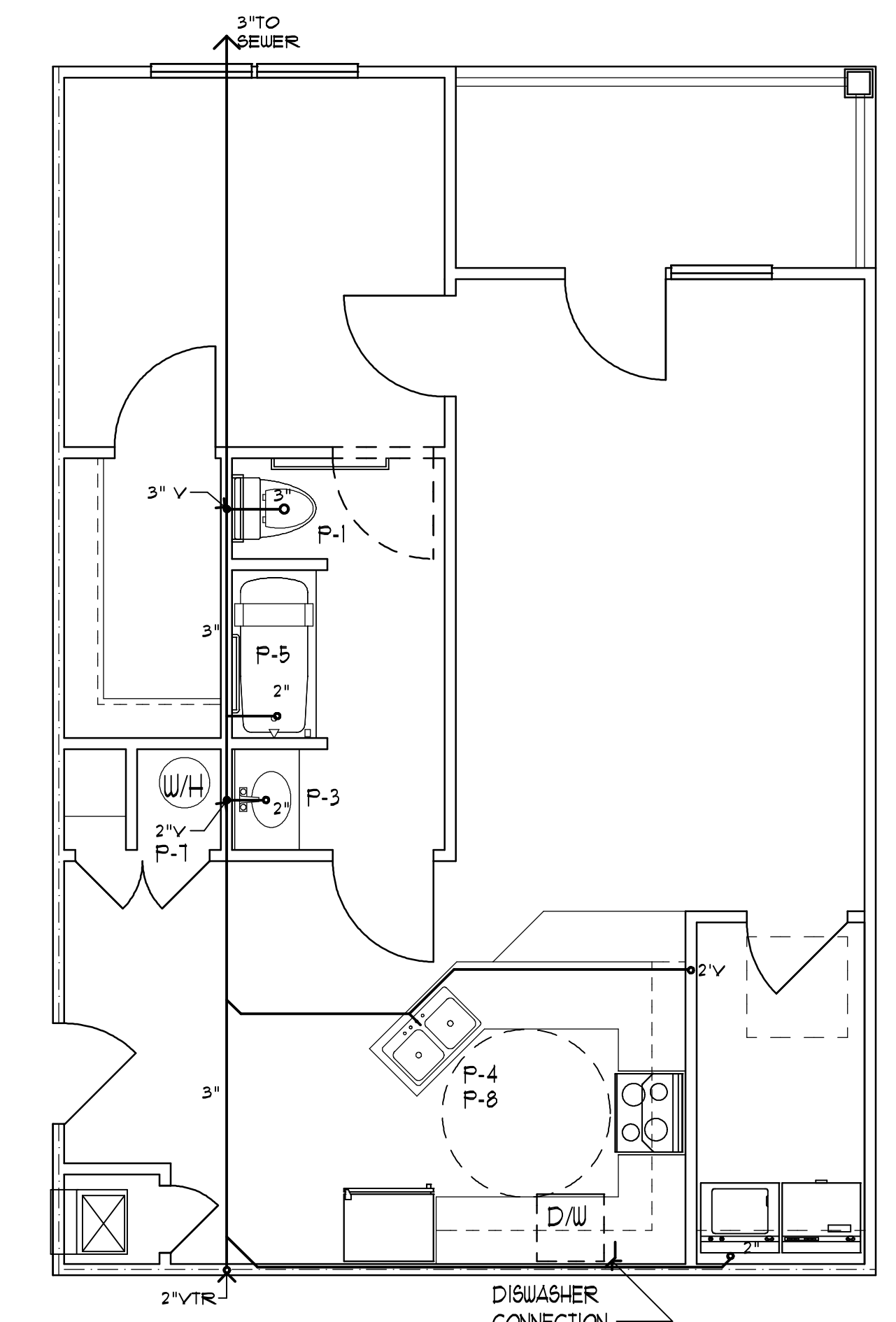
3 3 BED SEWER PLAN
P-2

1/4" = 1'-0"



2 2 BED SEWER PLAN
P-2

1/4" = 1'-0"



1 1 BED SEWER PLAN
P-2

1/4" = 1'-0"