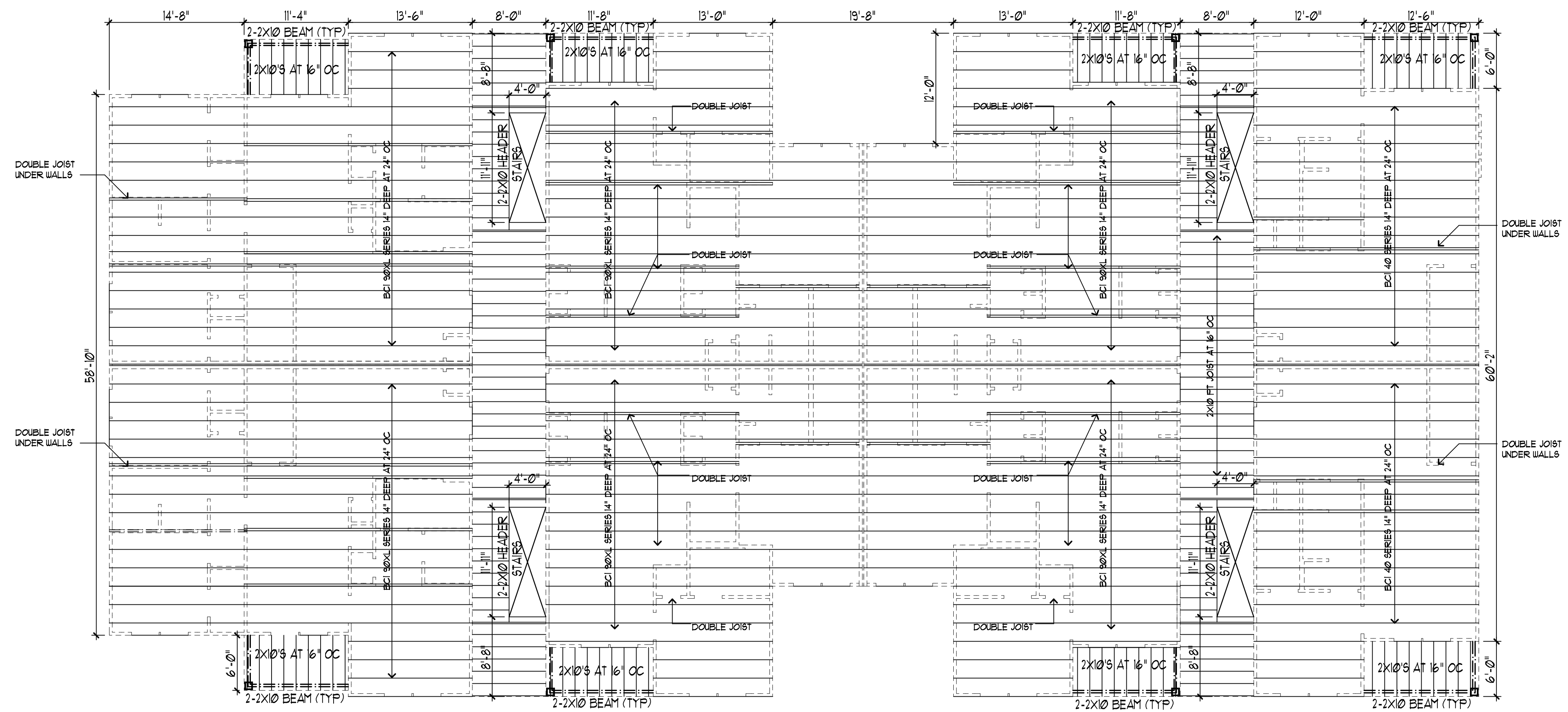


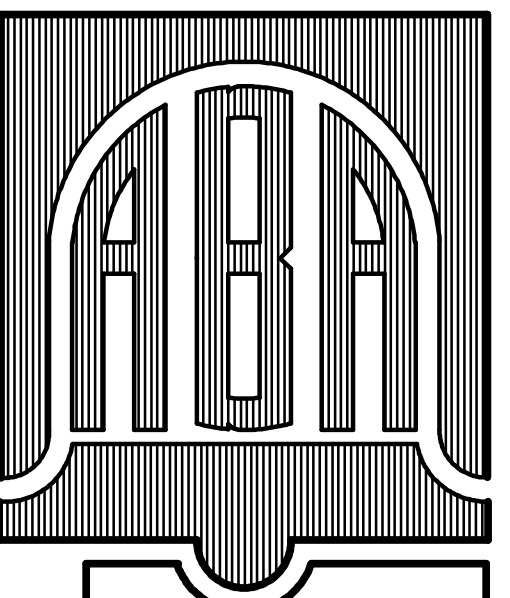
2x6 STICK FRAMING OVER TRUSSES. DESIGN TRUSSES TO CARRY ADDITIONAL OVERFRAME LOAD TYPICAL.

1 ROOF PLAN / DRAFTSTOP BLDG #1
 8-3 DRAFT STOPPING TO BE INSTALLED AT TENANT SEPARATION WALLS 1/8"=1'-0"

INDICATES ATTIC DRAFT STOP LABEL WALLS AS DRAFT STOP AND INSTALL DOORS THAT ARE SELF CLOSING. DRAFT STOP 1 HR RATED.



1 FLOOR FRAMING PLAN BLDG #1
 5-2 1/8"=1'-0"

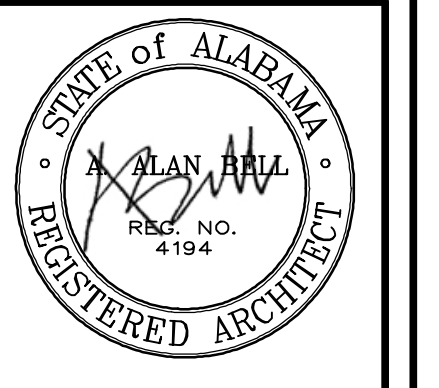


ALAN BELL ARCHITECT Inc
 ARCHITECTURE, ENGINEERING, PLANNING ASSOCIATES
 MARK SMITH, DOUGLAS ELKINS
 LORI MOON, LARRY TRANSUE, ADAM LONG
 alanbellarchitect.com
 8 EAST 4TH AVE
 ROME, GA
 211 GORDON ST
 BREMEN, GA
 770-537-8856
 770-630-8856
 770-232-2256

| REVISIONS | BY |
|-----------|----|
| | |
| | |
| | |

NEW APARTMENTS FOR
PER POINT
 LINCOLN, ALABAMA

CONTRACTOR SHALL VERIFY ALL CONDITIONS AND DIMENSIONS BEFORE EXECUTING ANY WORK. THIS DOCUMENT IS THE SOLE PROPERTY OF ALAN BELL ARCHITECT AND SHALL NOT BE COPIED IN WHOLE OR IN PART WITHOUT EXPRESSED WRITTEN CONSENT FROM ALAN BELL ARCHITECT.



DATE: MARCH 11, 2010
 SCALE: AS NOTED
 JOB NO.: 06034-HII
 SHEET
 S-2
 OF 4 SHEETS