

HVAC FIRE SAFETY NOTES

FURNACES AND AIR HANDLERS SHALL BE EQUIPPED WITH DUCT MOUNTED SMOKE DETECTORS IN THE SUPPLY AND RETURN AIR PLENUM. THESE ITEMS SHALL BE FURNISHED BY THE FIRE ALARM CONTRACTOR AND INSTALLED BY THE MECHANICAL CONTRACTOR.

FURNACES, FANS AND AIR HANDLERS SHALL BE EQUIPPED WITH FIRESTAYS MOUNTED IN THE SUPPLY PLENUM. FIRESTAYS SHALL HAVE MANUAL RESETS, BE ACCESSIBLE AND SHALL BE SET TO SHUT DOWN THE FANS WHEN THE TEMPERATURE REACHES 130 DEGREES F. THESE ITEMS SHALL BE FURNISHED AND INSTALLED BY THE MECHANICAL CONTRACTOR.

THE HVAC EQUIPMENT CONTROLS SHALL BE ELECTRICALLY INTERLOCKED TO THE FIRE ALARM SYSTEM. THE MECHANICAL CONTRACTOR SHALL FURNISH RELAYS IN THE CONTROL CIRCUITRY TO SHUT DOWN FAN OPERATION IN THE EVENT OF INITIATION OF THE FIRE ALARM SYSTEM.

FIRE SAFETY SHUTOFF DEVICES SHALL BE INSTALLED TO INTERRUPT THE OPERATION OF THE FANS REGARDLESS OF POSITION OF ANY CONTROLS OR SELECTOR SWITCHES.

GENERAL MECHANICAL NOTES

THE MECHANICAL CONTRACTOR SHALL SURVEY THE PLANS AND SPECIFICATIONS AND MAKE THE EQUIPMENT IN SUCH A MANNER TO AVOID CONTACT WITH OTHER TRADES AND SO THAT THE EQUIPMENT WILL BE SERVICEABLE AT THE CLOSE OF THE PROJECT.

THE MECHANICAL CONTRACTOR SHALL CONNECT ALL EQUIPMENT REQUIRING AIR CONDITIONING TO THE RESPECTIVE UNITS AND OTHER EQUIPMENT.

THE MECHANICAL CONTRACTOR SHALL BE RESPONSIBLE FOR INSTALLATION OF ALL EQUIPMENT IN SUCH A MANNER THAT THE INTAKES OF ALL EQUIPMENT DO NOT PICK UP WATER IN THE AIRSTREAM.

THE MECHANICAL CONTRACTOR SHALL EMPLOY SKILLED CRAFTSMEN IN THE AIR CONDITIONING TRADE AND SHALL HAVE AT LEAST FIVE YEARS EXPERIENCE IN THIS FIELD.

ALL DUCTWORK SHALL BE FABRICATED OF GALVANIZED STEEL AND SHALL BE IN COMPLIANCE WITH ALL CODES. THE SIZES SHOWN ON THE DRAWINGS ARE FREE AIR SIZES AND SHALL BE ADJUSTED TO ALLOW FOR DUCTLATER WHERE NECESSARY OR EQUIVALENT RECTANGULAR DUCT SIZES WHERE JOB CONDITIONS DICTATE.

ALL DUCTWORK SHALL BE INSULATED USING 2" (R-6) FIBERGLASS POLYURETHANE WITH ALL JOINTS IN THE INSULATION TAPE. THE DUCTWORK SHALL BE SEALED USING AN APPROVED MASTIC PRIOR TO INSULATION.

ALL GRILLES, REGISTERS AND DIFFUSERS SHALL BE TRUSS, METALWARE OR APPROVED EQUAL EQUIPMENT SHALL BE TRANE, BARD, CARRIER, LENNOX OR APPROVED EQUAL. FANS SHALL BE MANUFACTURED AS SPECIFIED OR EQUAL MANUFACTURER PRIOR APPROVED.

ALL AIR HANDLERS SHALL BE EQUIPPED WITH AUXILIARY DRAIN PANS EQUIPPED WITH FLOAT TYPE SHUTOFF SWITCHES TO PREVENT SPILLAGE ONTO CEILING. THE DRAINS SHALL BE 3/4" COPPER PIPE FROM BOTH THE UNIT AND THE AUXILIARY PAN.

THE CONDENSATE DRAINS SHALL BE PITCHED 1/4" IN ONE FOOT TO A POINT OUTSIDE THE STRUCTURE.

ALL AIR HANDLING EQUIPMENT SHALL BE SUSPENDED FROM THE STRUCTURE USING 1/2" MINIMUM DIAMETER ROD AND RUBBER SPRING TYPE HANGERS. IN SHEAR HANGERS SHALL BE USED AND AN APPROVED STRONGER. DRUM TYPE HANGERS SHALL BE USED FOR ALL OTHERS. STRUTTERS SHALL BE SET ON NEOTRANE ISOLATORS FOR DAMPENING OF VIBRATION TRANSMISSION.

THE MECHANICAL CONTRACTOR SHALL BE RESPONSIBLE FOR CONSTRUCTION OF THE CONCRETE PADS FOR THE CONDENSING UNIT. PADS SHALL BE CONSTRUCTED OF 3000# PRIME CONCRETE AND SHALL BE 4" THICK. THE PADS SHALL SLOPE AWAY FROM THE BUILDING TO FACILITATE DRAINAGE.

ALL RETURN GRILLES & FRESH AIR INTAKE GRILLES SHALL BE FILTER GRILLES.

THE MECHANICAL CONTRACTOR SHALL EMPLOY CANVAS FLEXIBLE DUCT CONNECTORS FOR ALL CONNECTIONS TO THE AIR HANDLERS. DUCT CONNECTIONS TO THE DIFFUSERS SHALL BE MADE USING 24" OF FLEX DUCT(WAX).

NO DUCTWORK SHALL BEAR ON THE CEILING.

PERFORATED BANDING MATERIAL SHALL NOT BE ACCEPTABLE AS A HANGER MATERIAL.

DUCTLATER SHALL BE MECHANICALLY ATTACHED TO THE DUCTWORK.

ALL REFRIGERANT LINES SHALL BE CONSTRUCTED OF REFRIGERANT TUBING AND SHALL BE SIZED ACCORDING TO MANUFACTURER'S RECOMMENDATIONS FOR EFFECTIVE LENGTH. THE TUBING SHALL ENTER THE WALL AT A POINT NO MORE THAN 12" ABOVE THE FINISHED GRADE AND NEVER BE EXPOSED ON OUTSIDE WALLS.

COMPRESSORS SHALL BE EQUIPPED WITH 7 MINUTE TIME DELAYS TO PREVENT SHORT CYCLING.

THERMOSTATS SHALL BE AS PROVIDED BY THE EQUIPMENT MANUFACTURER OR HONEYWELL, OR WHITE-ROGERS AND SHALL BE ELECTRONIC PROGRAMMABLE.

ALL AUXILIARY DRAIN PANS SHALL BE ONE PIECE ALUMINUM WELDED SEAM UNITS WITH THREADED DRAIN OUTLET. USE DIELECTRIC UNION FOR CONNECTION OF COPPER.

ALL OUTSIDE GRILLES SHALL BE EXTRUDED ALUMINUM WITH ANODIZED BRONZE FINISH AS WELL AS DRAINABLE BLADES IN MATCHING COLORS.

ALL GRILLES FOR SUPPLY AIR IN THE BUILDING SHALL HAVE VERTICAL AIRFLOW CAPABILITY AS WELL AS BALANCING DAMPER ADJUSTABLE FROM THE FACE.

NOTES

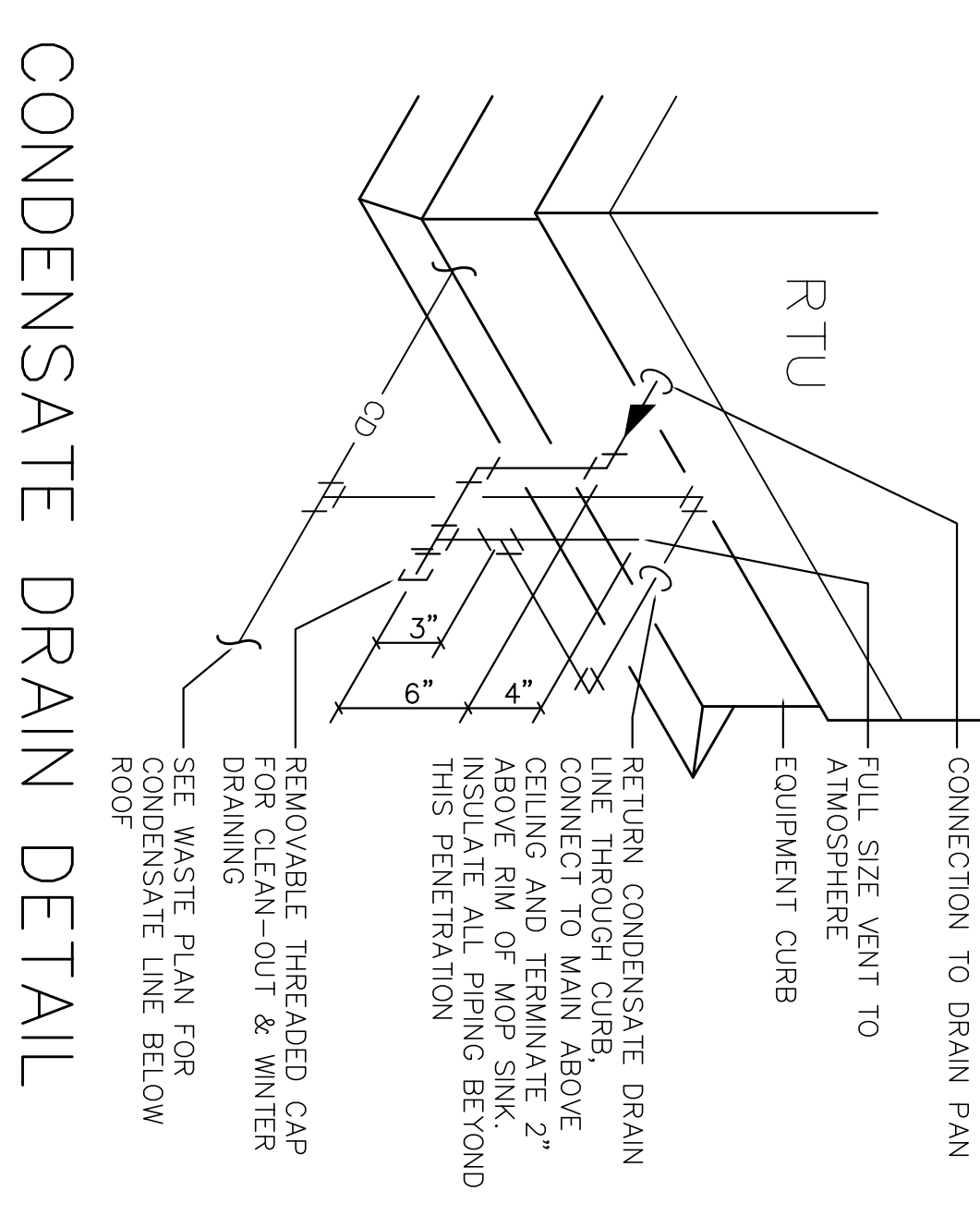
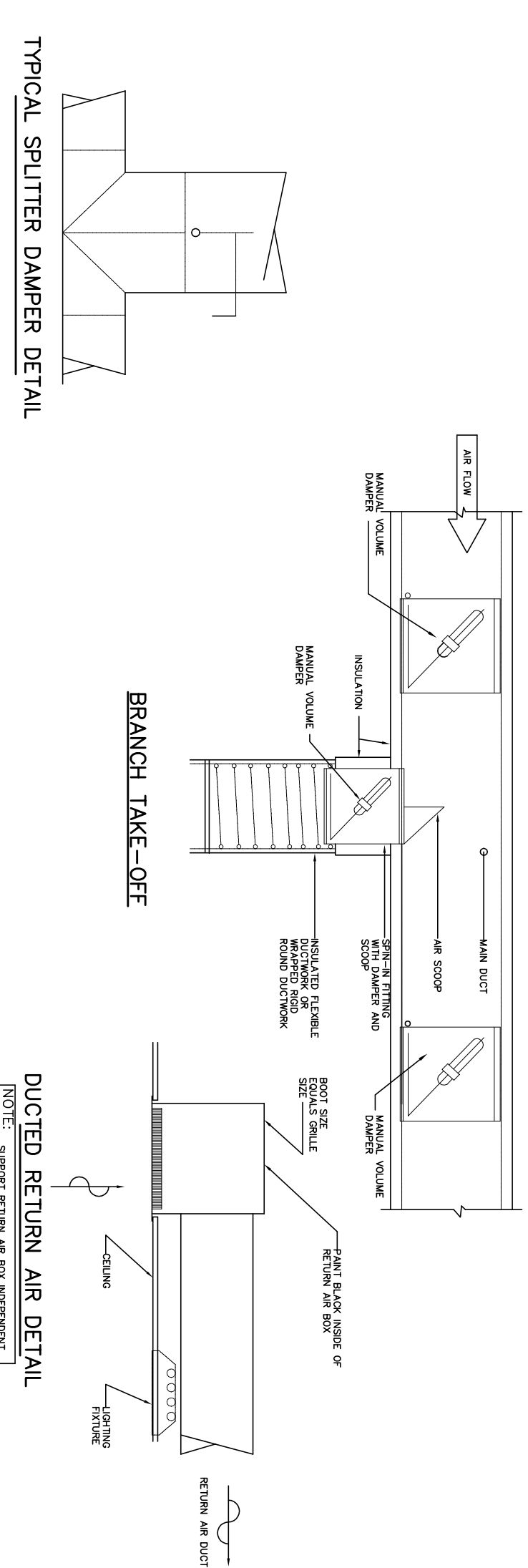
- DUCT TOILET EXHAUST TO EXTERIOR OF BUILDING WITH WALL CAP - 8X6 DUCT
- FRESH AIR SHALL BE SUPPLIED TO EACH AIR CONDITIONER AT A RATE OF 10% MINIMUM

CU-1	-	CARRIER OR EQUAL 20 TON AIR CONDITIONING CONDENSING UNIT - 208/3/60
CU-2	-	HIGH EFF. EQUAL TO 15 SEER CARRIER OR EQUAL 15 TON AIR CONDITIONING CONDENSING UNIT - 208/3/60
CU-3	-	HIGH EFF. EQUAL TO 15 SEER CARRIER OR EQUAL 20 TON AIR CONDITIONING CONDENSING UNIT - 208/3/60
CU-4	-	HIGH EFF. EQUAL TO 15 SEER CARRIER OR EQUAL 3 TON AIR CONDITIONING CONDENSING UNIT - 208/3/60
CU-5	-	HIGH EFF. EQUAL TO 15 SEER CARRIER OR EQUAL 10 TON AIR CONDITIONING CONDENSING UNIT - 208/3/60
CU-6A	-	HIGH EFF. EQUAL TO 15 SEER CARRIER OR EQUAL 5 TON AIR CONDITIONING CONDENSING UNIT - 208/3/60
CU-6B	-	HIGH EFF. EQUAL TO 15 SEER CARRIER OR EQUAL 5 TON AIR CONDITIONING CONDENSING UNIT - 208/3/60
CU-7	-	HIGH EFF. EQUAL TO 15 SEER CARRIER OR EQUAL 2 TON AIR CONDITIONING CONDENSING UNIT - 208/3/60
AHU-1	-	HIGH EFF. EQUAL TO 15 SEER CARRIER OR EQUAL 20 TON AIR HANDLER W/COOLING COIL - 208/3/60
AHU-2	-	HIGH EFF. EQUAL TO 15 SEER CARRIER OR EQUAL 15 TON AIR HANDLER W/COOLING COIL - 208/3/60
AHU-3	-	HIGH EFF. EQUAL TO 15 SEER CARRIER OR EQUAL 20 TON AIR HANDLER W/COOLING COIL - 208/3/60
AHU-4	-	HIGH EFF. EQUAL TO 15 SEER CARRIER OR EQUAL 3 TON AIR HANDLER W/COOLING COIL - 208/3/60
AHU-5	-	HIGH EFF. EQUAL TO 15 SEER CARRIER OR EQUAL 10 TON AIR HANDLER W/COOLING COIL - 208/3/60
AHU-6A	-	HIGH EFF. EQUAL TO 15 SEER CARRIER OR EQUAL 5 TON AIR HANDLER W/COOLING COIL - 208/3/60
AHU-6B	-	HIGH EFF. EQUAL TO 15 SEER CARRIER OR EQUAL 5 TON AIR HANDLER W/COOLING COIL - 208/3/60
AHU-7	-	HIGH EFF. EQUAL TO 15 SEER CARRIER OR EQUAL 2 TON AIR HANDLER W/COOLING COIL - 208/3/60
RTH-1	-	SCHWANK ULTRASCHWANK UHE 200-50/60/70 TUBE HEATER - 120V
RTH-2	-	SCHWANK ULTRASCHWANK UHE 200-50/60/70 TUBE HEATER - 120V
RTH-3	-	SCHWANK ULTRASCHWANK UHE 200-50/60/70 TUBE HEATER - 120V
RTH-4	-	SCHWANK ULTRASCHWANK UHE 200-50/60/70 TUBE HEATER - 120V
RTH-5	-	SCHWANK ULTRASCHWANK UHE 200-50/60/70 TUBE HEATER - 120V
RTH-6	-	SCHWANK ULTRASCHWANK UHE 200-50/60/70 TUBE HEATER - 120V
RTH-7	-	SCHWANK ULTRASCHWANK UHE 200-50/60/70 TUBE HEATER - 120V
RTH-8	-	SCHWANK ULTRASCHWANK UHE 200-50/60/70 TUBE HEATER - 120V
RTH-9	-	SCHWANK ULTRASCHWANK UHE 200-50/60/70 TUBE HEATER - 120V
EF-1	-	AMERICAN COOLAIRE 48" X48" METAL BUILDING EXHAUST FAN SET WITH 6500 CFM FAN METAL BUILDING SLEEVE, EXTERIOR SHUTTER, INSIDE MOTOR SIDE GUARD, ALL FLANGES AND SUPPORTS HIGH EFFICIENCY MOTOR AND ALL PULLEYS AND BELTS FOR A COMPLETE INSTALLATION - 208/3/60
EF-2	-	AMERICAN COOLAIRE 48" X48" METAL BUILDING EXHAUST FAN SET WITH 6500 CFM FAN METAL BUILDING SLEEVE, EXTERIOR SHUTTER, INSIDE MOTOR SIDE GUARD, ALL FLANGES AND SUPPORTS HIGH EFFICIENCY MOTOR AND ALL PULLEYS AND BELTS FOR A COMPLETE INSTALLATION - 208/3/60
BAF-01	-	BIG ASS FAN COMPANY 16" DIAMETER POWERFOL X W/NITROSEAL DRIVE - PFX16
BAF-02	-	BIG ASS FAN COMPANY 16" DIAMETER POWERFOL X W/NITROSEAL DRIVE - PFX16
BAF-03	-	BIG ASS FAN COMPANY 16" DIAMETER POWERFOL X W/NITROSEAL DRIVE - PFX16
BAF-04	-	BIG ASS FAN COMPANY 16" DIAMETER POWERFOL X W/NITROSEAL DRIVE - PFX16
BAF-05	-	BIG ASS FAN COMPANY 16" DIAMETER POWERFOL X W/NITROSEAL DRIVE - PFX16
BAF-06	-	BIG ASS FAN COMPANY 16" DIAMETER POWERFOL X W/NITROSEAL DRIVE - PFX16
BAF-07	-	BIG ASS FAN COMPANY 16" DIAMETER POWERFOL X W/NITROSEAL DRIVE - PFX16
BAF-08	-	BIG ASS FAN COMPANY 16" DIAMETER POWERFOL X W/NITROSEAL DRIVE - PFX16
BAF-09	-	BIG ASS FAN COMPANY 16" DIAMETER POWERFOL X W/NITROSEAL DRIVE - PFX16
BAF-10	-	BIG ASS FAN COMPANY 16" DIAMETER POWERFOL X W/NITROSEAL DRIVE - PFX16
BAF-11	-	BIG ASS FAN COMPANY 16" DIAMETER POWERFOL X W/NITROSEAL DRIVE - PFX16
BAF-12	-	BIG ASS FAN COMPANY 16" DIAMETER POWERFOL X W/NITROSEAL DRIVE - PFX16
BAF-13	-	BIG ASS FAN COMPANY 16" DIAMETER POWERFOL X W/NITROSEAL DRIVE - PFX16
BAF-14	-	BIG ASS FAN COMPANY 16" DIAMETER POWERFOL X W/NITROSEAL DRIVE - PFX16
BAF-15	-	BIG ASS FAN COMPANY 16" DIAMETER POWERFOL X W/NITROSEAL DRIVE - PFX16
BAF-16	-	BIG ASS FAN COMPANY 16" DIAMETER POWERFOL X W/NITROSEAL DRIVE - PFX16
BAF-17	-	BIG ASS FAN COMPANY 16" DIAMETER POWERFOL X W/NITROSEAL DRIVE - PFX16
BAF-18	-	BIG ASS FAN COMPANY 16" DIAMETER POWERFOL X W/NITROSEAL DRIVE - PFX16
BAF-19	-	BIG ASS FAN COMPANY 16" DIAMETER POWERFOL X W/NITROSEAL DRIVE - PFX16
BAF-20	-	BIG ASS FAN COMPANY 16" DIAMETER POWERFOL X W/NITROSEAL DRIVE - PFX16
BAF-21	-	BIG ASS FAN COMPANY 16" DIAMETER POWERFOL X W/NITROSEAL DRIVE - PFX16
BAF-22	-	BIG ASS FAN COMPANY 16" DIAMETER POWERFOL X W/NITROSEAL DRIVE - PFX16
BAF-23	-	BIG ASS FAN COMPANY 16" DIAMETER POWERFOL X W/NITROSEAL DRIVE - PFX16
BAF-24	-	BIG ASS FAN COMPANY 16" DIAMETER POWERFOL X W/NITROSEAL DRIVE - PFX16
BAF-25	-	BIG ASS FAN COMPANY 16" DIAMETER POWERFOL X W/NITROSEAL DRIVE - PFX16
BAF-26	-	BIG ASS FAN COMPANY 16" DIAMETER POWERFOL X W/NITROSEAL DRIVE - PFX16
BAF-27	-	BIG ASS FAN COMPANY 16" DIAMETER POWERFOL X W/NITROSEAL DRIVE - PFX16
BAF-28	-	BIG ASS FAN COMPANY 16" DIAMETER POWERFOL X W/NITROSEAL DRIVE - PFX16
BAF-29	-	BIG ASS FAN COMPANY 16" DIAMETER POWERFOL X W/NITROSEAL DRIVE - PFX16
BAF-30	-	BIG ASS FAN COMPANY 16" DIAMETER POWERFOL X W/NITROSEAL DRIVE - PFX16
BAF-31	-	BIG ASS FAN COMPANY 16" DIAMETER POWERFOL X W/NITROSEAL DRIVE - PFX16
BAF-32	-	BIG ASS FAN COMPANY 16" DIAMETER POWERFOL X W/NITROSEAL DRIVE - PFX16
BAF-33	-	BIG ASS FAN COMPANY 16" DIAMETER POWERFOL X W/NITROSEAL DRIVE - PFX16
BAF-34	-	BIG ASS FAN COMPANY 16" DIAMETER POWERFOL X W/NITROSEAL DRIVE - PFX16
BAF-35	-	BIG ASS FAN COMPANY 16" DIAMETER POWERFOL X W/NITROSEAL DRIVE - PFX16
BAF-36	-	BIG ASS FAN COMPANY 16" DIAMETER POWERFOL X W/NITROSEAL DRIVE - PFX16
BAF-37	-	BIG ASS FAN COMPANY 16" DIAMETER POWERFOL X W/NITROSEAL DRIVE - PFX16
BAF-38	-	BIG ASS FAN COMPANY 16" DIAMETER POWERFOL X W/NITROSEAL DRIVE - PFX16
BAF-39	-	BIG ASS FAN COMPANY 16" DIAMETER POWERFOL X W/NITROSEAL DRIVE - PFX16
BAF-40	-	BIG ASS FAN COMPANY 16" DIAMETER POWERFOL X W/NITROSEAL DRIVE - PFX16
BAF-41	-	BIG ASS FAN COMPANY 16" DIAMETER POWERFOL X W/NITROSEAL DRIVE - PFX16
BAF-42	-	BIG ASS FAN COMPANY 16" DIAMETER POWERFOL X W/NITROSEAL DRIVE - PFX16
BAF-43	-	BIG ASS FAN COMPANY 16" DIAMETER POWERFOL X W/NITROSEAL DRIVE - PFX16
BAF-44	-	BIG ASS FAN COMPANY 16" DIAMETER POWERFOL X W/NITROSEAL DRIVE - PFX16
BAF-45	-	BIG ASS FAN COMPANY 16" DIAMETER POWERFOL X W/NITROSEAL DRIVE - PFX16
BAF-46	-	BIG ASS FAN COMPANY 16" DIAMETER POWERFOL X W/NITROSEAL DRIVE - PFX16
BAF-47	-	BIG ASS FAN COMPANY 16" DIAMETER POWERFOL X W/NITROSEAL DRIVE - PFX16
BAF-48	-	BIG ASS FAN COMPANY 16" DIAMETER POWERFOL X W/NITROSEAL DRIVE - PFX16
BAF-49	-	BIG ASS FAN COMPANY 16" DIAMETER POWERFOL X W/NITROSEAL DRIVE - PFX16
BAF-50	-	BIG ASS FAN COMPANY 16" DIAMETER POWERFOL X W/NITROSEAL DRIVE - PFX16
BAF-51	-	BIG ASS FAN COMPANY 16" DIAMETER POWERFOL X W/NITROSEAL DRIVE - PFX16
BAF-52	-	BIG ASS FAN COMPANY 16" DIAMETER POWERFOL X W/NITROSEAL DRIVE - PFX16
BAF-53	-	BIG ASS FAN COMPANY 16" DIAMETER POWERFOL X W/NITROSEAL DRIVE - PFX16
BAF-54	-	BIG ASS FAN COMPANY 16" DIAMETER POWERFOL X W/NITROSEAL DRIVE - PFX16
BAF-55	-	BIG ASS FAN COMPANY 16" DIAMETER POWERFOL X W/NITROSEAL DRIVE - PFX16
BAF-56	-	BIG ASS FAN COMPANY 16" DIAMETER POWERFOL X W/NITROSEAL DRIVE - PFX16
BAF-57	-	BIG ASS FAN COMPANY 16" DIAMETER POWERFOL X W/NITROSEAL DRIVE - PFX16
BAF-58	-	BIG ASS FAN COMPANY 16" DIAMETER POWERFOL X W/NITROSEAL DRIVE - PFX16
BAF-59	-	BIG ASS FAN COMPANY 16" DIAMETER POWERFOL X W/NITROSEAL DRIVE - PFX16
BAF-60	-	BIG ASS FAN COMPANY 16" DIAMETER POWERFOL X W/NITROSEAL DRIVE - PFX16
BAF-61	-	BIG ASS FAN COMPANY 16" DIAMETER POWERFOL X W/NITROSEAL DRIVE - PFX16
BAF-62	-	BIG ASS FAN COMPANY 16" DIAMETER POWERFOL X W/NITROSEAL DRIVE - PFX16
BAF-63	-	BIG ASS FAN COMPANY 16" DIAMETER POWERFOL X W/NITROSEAL DRIVE - PFX16
BAF-64	-	BIG ASS FAN COMPANY 16" DIAMETER POWERFOL X W/NITROSEAL DRIVE - PFX16
BAF-65	-	BIG ASS FAN COMPANY 16" DIAMETER POWERFOL X W/NITROSEAL DRIVE - PFX16
BAF-66	-	BIG ASS FAN COMPANY 16" DIAMETER POWERFOL X W/NITROSEAL DRIVE - PFX16
BAF-67	-	BIG ASS FAN COMPANY 16" DIAMETER POWERFOL X W/NITROSEAL DRIVE - PFX16
BAF-68	-	BIG ASS FAN COMPANY 16" DIAMETER POWERFOL X W/NITROSEAL DRIVE - PFX16
BAF-69	-	BIG ASS FAN COMPANY 16" DIAMETER POWERFOL X W/NITROSEAL DRIVE - PFX16
BAF-70	-	BIG ASS FAN COMPANY 16" DIAMETER POWERFOL X W/NITROSEAL DRIVE - PFX16
BAF-71	-	BIG ASS FAN COMPANY 16" DIAMETER POWERFOL X W/NITROSEAL DRIVE - PFX16
BAF-72	-	BIG ASS FAN COMPANY 16" DIAMETER POWERFOL X W/NITROSEAL DRIVE - PFX16
BAF-73	-	BIG ASS FAN COMPANY 16" DIAMETER POWERFOL X W/NITROSEAL DRIVE - PFX16
BAF-74	-	BIG ASS FAN COMPANY 16" DIAMETER POWERFOL X W/NITROSEAL DRIVE - PFX16
BAF-75	-	BIG ASS FAN COMPANY 16" DIAMETER POWERFOL X W/NITROSEAL DRIVE - PFX16
BAF-76	-	BIG ASS FAN COMPANY 16" DIAMETER POWERFOL X W/NITROSEAL DRIVE - PFX16
BAF-77	-	BIG ASS FAN COMPANY 16" DIAMETER POWERFOL X W/NITROSEAL DRIVE - PFX16
BAF-78	-	BIG ASS FAN COMPANY 16" DIAMETER POWERFOL X W/NITROSEAL DRIVE - PFX16
BAF-79	-	BIG ASS FAN COMPANY 16" DIAMETER POWERFOL X W/NITROSEAL DRIVE - PFX16
BAF-80	-	BIG ASS FAN COMPANY 16" DIAMETER POWERFOL X W/NITROSEAL DRIVE - PFX16
BAF-81	-	BIG ASS FAN COMPANY 16" DIAMETER POWERFOL X W/NITROSEAL DRIVE - PFX16
BAF-82	-	BIG ASS FAN COMPANY 16" DIAMETER POWERFOL X W/NITROSEAL DRIVE - PFX16
BAF-83	-	BIG ASS FAN COMPANY 16" DIAMETER POWERFOL X W/NITROSEAL DRIVE - PFX16
BAF-84	-	BIG ASS FAN COMPANY 16" DIAMETER POWERFOL X W/NITROSEAL DRIVE - PFX16
BAF-85	-	BIG ASS FAN COMPANY 16" DIAMETER POWERFOL X W/NITROSEAL DRIVE - PFX16
BAF-86	-	BIG ASS FAN COMPANY 16" DIAMETER POWERFOL X W/NITROSEAL DRIVE - PFX16
BAF-87	-	BIG ASS FAN COMPANY 16" DIAMETER POWERFOL X W/NITROSEAL DRIVE - PFX16
BAF-88	-	BIG ASS FAN COMPANY 16" DIAMETER POWERFOL X W/NITROSEAL DRIVE - PFX16
BAF-89	-	BIG ASS FAN COMPANY 16" DIAMETER POWERFOL X W/NITROSEAL DRIVE - PFX16
BAF-90	-	BIG ASS FAN COMPANY 16" DIAMETER POWERFOL X W/NITROSEAL DRIVE - PFX16
BAF-91	-	BIG ASS FAN COMPANY 16" DIAMETER POWERFOL X W/NITROSEAL DRIVE - PFX16
BAF-92	-	BIG ASS FAN COMPANY 16" DIAMETER POWERFOL X W/NITROSEAL DRIVE - PFX16
BAF-93	-	BIG ASS FAN COMPANY 16" DIAMETER POWERFOL X W/NITROSEAL DRIVE - PFX16
BAF-94	-	BIG ASS FAN COMPANY 16" DIAMETER POWERFOL X W/NITROSEAL DRIVE - PFX16
BAF-95	-	BIG ASS FAN COMPANY 16" DIAMETER POWERFOL X W/NITROSEAL DRIVE - PFX16
BAF-96	-	BIG ASS FAN COMPANY 16" DIAMETER POWERFOL X W/NITROSEAL DRIVE - PFX16
BAF-97	-	BIG ASS FAN COMPANY 16" DIAMETER POWERFOL X W/NITROSEAL DRIVE - PFX16
BAF-98	-	BIG ASS FAN COMPANY 16" DIAMETER POWERFOL X W/NITROSEAL DRIVE - PFX16
BAF-99	-	BIG ASS FAN COMPANY 16" DIAMETER POWERFOL X W/NITROSEAL DRIVE - PFX16
BAF-100	-	BIG ASS FAN COMPANY 16" DIAMETER POWERFOL X W/NITROSEAL DRIVE - PFX16

MAGNETIC STARTERS, ENCLOSURES AND SELECTOR SWITCHES FOR ALL FANS SHALL BE FURNISHED BY MECHANICAL AND INSTALLED BY ELECTRICAL.

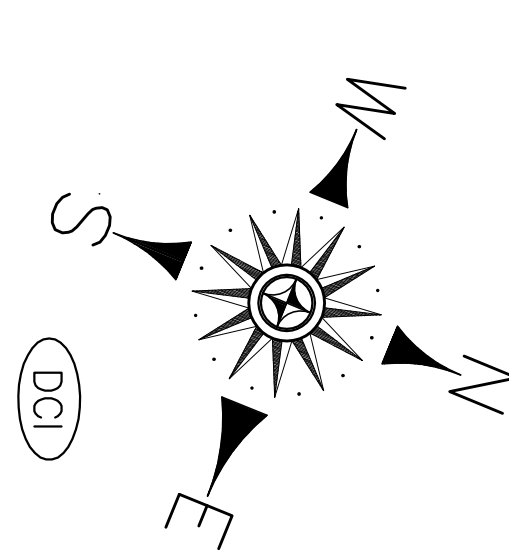
TOILET EXHAUST - PENN ZEPHER OR EQUAL 300 CFM/ TOILET SPACE - 120V

DUCT TO BACK WALL EXTERIOR - OPERATE WITH LIGHTS



CONDENSATE DRAIN DETAIL

NO SCALE



MECHANICAL PLAN - SCHEDULES & NOTES
1/8" = 1'-0"
M-20

<p>CONTRACTOR SHALL VERIFY ALL CONDITIONS AND DIMENSIONS BEFORE EXECUTING ANY WORK. THIS DOCUMENT IS THE SOLE PROPERTY OF ALAN BELL ARCHITECT AND SHALL NOT BE LOANED, REPRODUCED, COPIED, OR IN ANY MANNER EXPRESSED OR IMPLIED WITHOUT THE WRITTEN CONSENT FROM ALAN BELL ARCHITECT.</p>		<p>ADDITIONS AND RENOVATIONS FOR ALL - PRO HYUNDAI LAGRANGE, GEORGIA</p>	<p>ALAN BELL ARCHITECT Inc ARCHITECTURE, ENGINEERING, PLANNING ASSOCIATES MARK SMITH DOUGLAS ELKINS ADAM LONG alanbellarchitect.com 128 LOVORN ROAD CARROLLTON, GA 770-830-8866</p>	<p>REVISIONS BY JUNE 28, 2011 JHC</p>	<p>DATE: APRIL 26, 2011 SCALE: AS NOTED JOB NO.: 11006-001 SHEET M-3 OF SHEETS</p>
--	--	--	---	---	--